

**Agricultural Trailers**





Frequent change is  
our Tradition as well  
as our Motivation

Constant change  
means tradition  
and motivation  
at the same time

## Inhaltsverzeichnis

Single-axle 3-way tipping trailers	Pages 6 – 11
Tandem 3-way tipping trailers	Pages 12 – 15
Two-axle 3-way tipping trailers	Pages 16 – 27
Three-axle 3-way tipping trailers	Pages 28 – 29
Bale trailers	Pages 30 – 35
Box trailers	Pages 36 – 37
Dump trucks	Pages 38 – 45
Stone dump truck	Pages 46 – 47
Construction dump truck	Pages 48 – 49
Hook lifts	Pages 50 – 57
Manure spreaders	Pages 58 – 67
Sweep-off trailers	Pages 68 – 73
Combination vehicles and cranes	Pages 74 – 85
Crane control	Pages 86 – 87
Wood moving trailers and cranes	Pages 88 – 91
Optional possibilities for additional equipment	Pages 92 – 99



# Market Leader Components

We only use the highest-quality components available



The european market leader in transportation industry for chassis systems



At the top of the hydraulic cylinder market



Global market leader in surface treatment



Largest steel group worldwide – connects both leading steel producers – market leader on 4 continents



First-class tyres with high load capacity at low wheel pressure



Perfect, dense construction – stable Side panels – market leader in agricultural techniques



Leading provider of tilt bearings and tilt bearing techniques for vehicle constructions



Global producer of hydraulic loading and unloading systems and hook lift units



One of Europe's innovative and qualitative leaders for wear and structure technology in commercial vehicles



Global systems supplier with product focus on safety, environment and vehicle dynamics

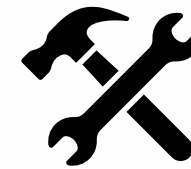
## This quality speaks for



Perfection



Stability



Durability



Highest precision through the use of latest robot technology



ACC immersion primer and powder coating

Oehler vehicle construction means that all steel parts are treated with a special surface coating. It contains a special primer that provides extra corrosion protection.

This modern immersion coating process begins with the cleaning and degreasing of parts by immersing them in different baths.

Subsequently, the automatic continuous flow system guarantees uniform coating with the ACC primer (homogeneous coating).

Through intense heating, the ACC is baked on and seals each part.

After drying inside and outside, the parts are powder coated and painted with the appropriate colour.

**This complex process ensures unique corrosion protection, UV resistance as well as durability.**





# 3-way tipping trailers

The maneuverable universal trailer for agriculture - forestry - landscaping



OL EDK 20  
Single-axle



Model	OL EDK 20
Article nr.	107209
Perm. total weight kg	2.000
Dead weight approx kg	500
Bridge mm, LxWxH	2290 x 1200 x 400
Platform height approx. mm*	760
Tipping cylinder stages	3
Max. axle loading capacity kg	2.000
Track width approx. mm	900
Tyres	26x12 LG 306 8 PR
Brake system	Overrun automatic reverse drive

\* Height depending on tyre size (brand)

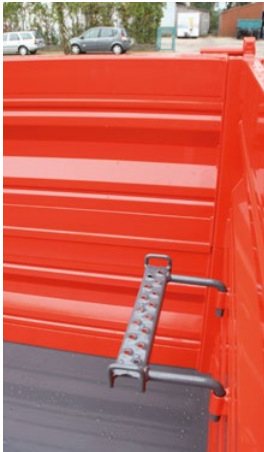
- Underride protection
- ACC immersion primer and powder coating
- Extremely low platform height
- Continuous floor plate – unwelded 4mm
- Sliding axle suitable up to 25 km/h
- Extra narrow track (900 mm)

## EDK 60 SG Gentle to the ground with wide tyres and height compensating

OL EDK 60 SG  
Single-axle



OL EDK 60 SG 1000 mm  
swinging tailboard



OL EDK 60 SG inside  
entry on option



OL EDK 60 SG stable base



OL EDK 60 SG height compensation  
through pivoting axle

Ideal for sensitive lawn surfaces such as in football stadiums, on training grounds or golf courses.

Model	OL EDK 60 SG
Article nr.	118440
Perm. total weight kg	6.000
Dead weight approx kg	1.400
Bridge mm, LxWxH	3500 x 2140 x 500
Platform height approx. mm*	980
Tipping cylinder stages	4
Max. axle loading capacity kg	6.500
Track width approx. mm	1900
Tyres	260/70-15.3 TL 126 A8 Flot. +
Overrun automatic reverse drive system	Standard

\* Height depending on tyre size (brand)



# 3-way tipping trailers

Single-axle

## The S-Standards for Pros



OL EDK 60 S with sidepanel (base board)



OL EDK 60 S with one attachment side panel



OL EDK 60 S with two attachment side panels



OL EDK 35 S with foliage attachment



Frame extension incl. Headstock for crane OL 4500 SG / P and OL 5600 SG / P without stanchion conversion

## The professional class: robust – durable – compact



### Standard equipment

- Torsion resistant chassis of closed stable C-frame
- Overrun automatic reverse drive, flanged (BPW)
- Perfect, dense construction: 2,5 mm thick side boards with high quality Hestal & Bernhofer fasteners
- Foldable steel side panels (lateral walls and rear wall), Attachments separately pendulous, Central locking at the rear, skirting board, grain slider
- Torsion free bridge frame with longitudinal and transverse Professionals, screwed end stanchions
- BPW axle suitable up to 40 km/h (up to 6,5 t)
- Foldable support wheel
- 12 Volt lighting system, power socket at the rear
- ACC immersion primer and powder coating
- Precision ball tilt bearing with cross-over safety fuse
- OL EDK 60 S available with 3-point linkage and PTO shaft drive
- Lateral tipping also available with attachment (see picture)
- Oversized tipping cylinder, cardan bearing with hard chrome plated piston rod and automatic stroke limitation



EDK S Standards locking

Model	OL EDK 35 S	OL EDK 45 S	OL EDK 60 S	EDK 80S - 25 km/h
Article nr.	101434	118440	100120	119240
Perm. total weight kg	3.500	4.500	6.000	8.000
Dead weight approx kg	750	1.100	1.200	1.700
Bridge mm, LxWxH	2530 x 1420 x 400	3500 x 1800 x 500	3500 x 1800 x 500	4000 x 2100 (2060) x 500
Platform height approx. mm*	880	910	940	1060
Tipping cylinder stages	3	3	3	4
Max. axle loading capacity kg	3.500	7.000	7.000	8000
Track width approx. mm	1100	1500	1500	1700
Tyres	10.0/75-15.3		11.5/80-15.3	400/60 - 15.5 TL 145 A8 Flotation +
Brake system	Overrun automatic reverse drive			

\* Height depending on tyre size (brand)



# 3-way tipping trailers

Single-axle



The premium class  
for agriculture, forestry, communities and golf courses

OL EDK 60  
Single-axle



The great among the small  
stable construction for toughest use

OL EDK 35  
Single-axle



OL EDK 35 with tilted foliage attachment

OL EDK 80  
Single-axle



OL EDK 80 with attachments



OL EDK 60 stable base

## Standard equipment

- Torsion resistant chassis of closed stable C-frame
- Overrun automatic reverse drive, flanged (BPW)
- Perfect, dense construction: 2,5 mm thick side panels with high quality Hestel & Bernhofer fasteners
- Foldable steel side panels (lateral walls and rear wall), Attachments separately pendulous, Central locking at the rear, skirting board, grain slider
- Torsion free bridge frame with longitudinal and transverse Professionalles, screwed end stanchions
- BPW axle suitable for 25 km/h
- BPW axle suitable up to 40 km/h (up to 6,5 t)
- Foldable support wheel
- 12 Volt lighting system, power socket at the rear
- ACC immersion primer and powder coating
- Precision ball tilt bearing with cross-over safety fuse
- Oversized tipping cylinder, cardan bearing with hard chrome plated piston rod and automatic stroke limitation

## Two for one

PTO shaft drive with  
3-point device including  
hydraulic drive: enables transport  
and operation of any working tool



OL EDK 70 with foliage attachment  
box for vacuum cleaner and optional  
3-point linkage



OL EDK 70 with foliage attachment for leaf  
vacuum cleaner

Model	OL EDK 60	OL EDK 70	EDK 80 - 25 km/h	EDK 80 - 40 km/h
Article nr.	100019	100032	119241	119242
Perm. total weight kg	6.000	7.000	8.000	8.000
Dead weight approx kg	1.600	1.600	2.200	2.200
Bridge mm, LxWxH	4000 x 2100(2060) x 500	4000 x 2100(2060) x 500	4500 x 2240(2180) x 500	4500 x 2240(2180) x 500
Platform height approx. mm*	1.080	1.140	1.080	1.060
Tipping cylinder stages	4	4	4	4
Max. axle loading capacity kg	7.000	8.000	8.000	8.000
Track width approx. mm	1.700	1.700	1.700	1.700
Tyres	13.0/75-16 TL 10 PR AW <sup>1</sup>	12.5/80-18/142 A8 <sup>1</sup>	400/60-15.5 TL 145 A8 Flotation+	19.0/45-17 18PR AW 708 BKT2
Brake system	Overrun automatic reverse drive	Haldex DruckluftBrake system	Overrun automatic reverse drive	

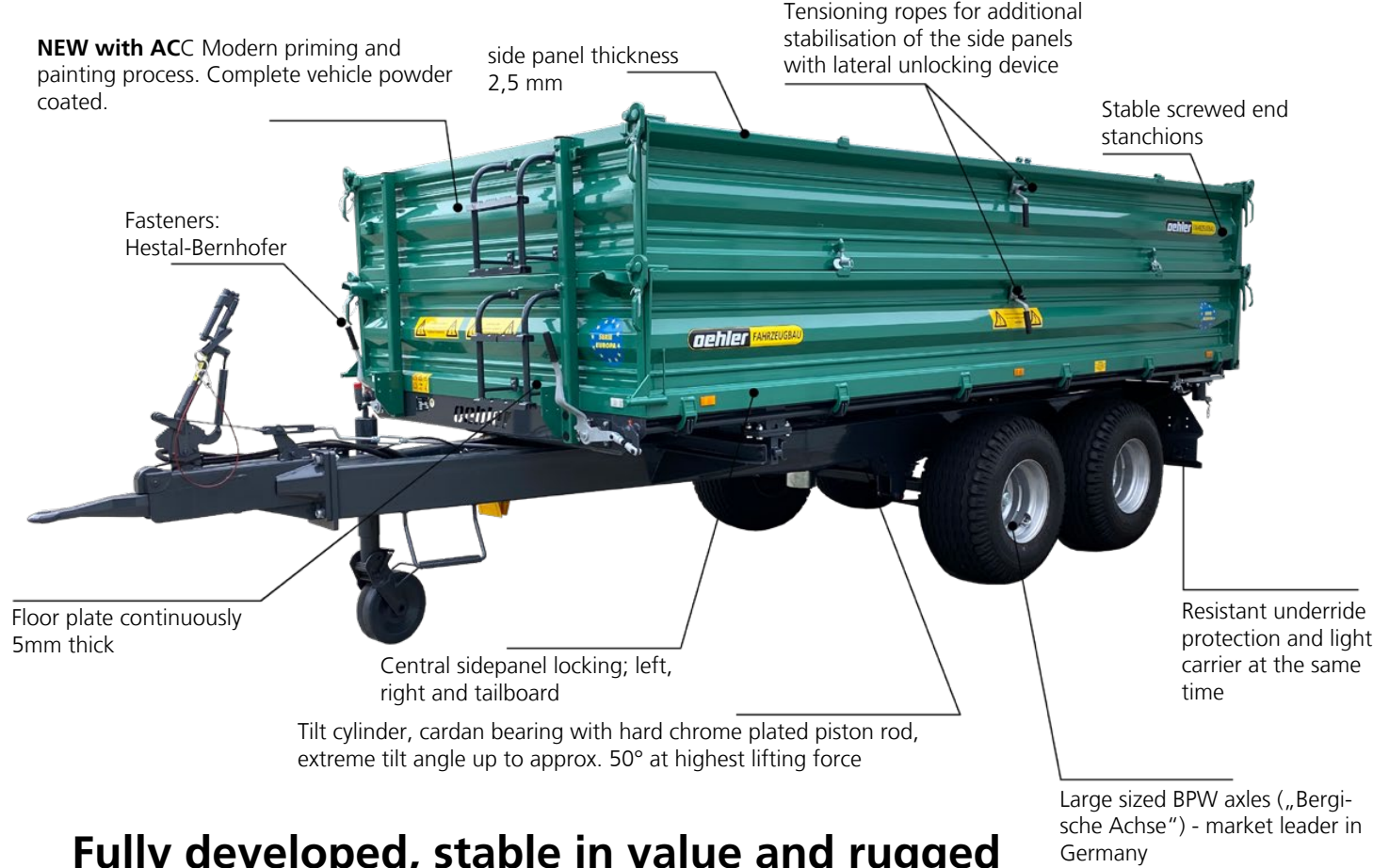
\* Height depending on tyre size (brand)



# 3-way tipping trailers TANDEM

## The multi-talented trailer

OL TDK 80  
Tandem



## Fully developed, stable in value and rugged



## The compressed air giant

OL TDK 130  
Tandem



OL TDK 130 with attachments and silo rear wall

### Standard equipment

- Torsion resistant chassis of rugged rectangular pipe frame
- 5mm floor plate
- Dual-circuit compressed air brake system
- Perfect dense construction: 2,5mm Side panels with high quality Hestal & Bernhofer fasteners
- Steel Side panels (lateral walls and rear wall) separately pendant, central locking on 3 sides, skirting board, grain slider, tensioning ropes
- Conical bridge, screwed end stanchions
- BPW axle suitable for 25/40 km/h, wide track
- Foldable supporting wheel
- 12 Volt lighting system, power socket at the rear
- ACC immersion primer and powder coating
- Precision ball tilt bearing with cross-over safety fuse
- Oversized tipping cylinder, cardan bearing with hard chrome plated piston rod and automatic stroke limitation
- Lower construction on option

Model	OL TDK 80 S	OL TDK 80	OL TDK 120	OL TDK 130	OL TDK 140
Article nr.	103642	100037	100050	103618	103547
Perm. total weight kg	8.000	8.000	12.000	13.000	14.000
Dead weight approx kg	2.100	2.480	2.500	2.700	3.000
Bridge mm, LxWxH	4000 x 2100(2060) x 500	4500 x 2240(2180) x 500	4500 x 2240(2180) x 600	4500 x 2240(2180) x 600	4500 x 2240(2180) x 600
Platform height ca. mm *	1.180	1.115	1.150	1.150	1.390
Tipping cylinder stages	4	4	5	5	5
Max. axle loading capacity kg	11.000	11.000	12.400	12.400	18.000
Track width approx. mm	1.700	1.700	1.700	1.700	1.850
Tyres	13.0/75-16 TL 10 PR AW (135A8) <sup>2</sup>	13.0/75-16 TL 10 PR AW (135A8) <sup>2</sup>	12.5/80-18/142 A8 <sup>2</sup>	12.5/80-18/142 A8 <sup>2</sup>	385/65R 22,5 retreaded

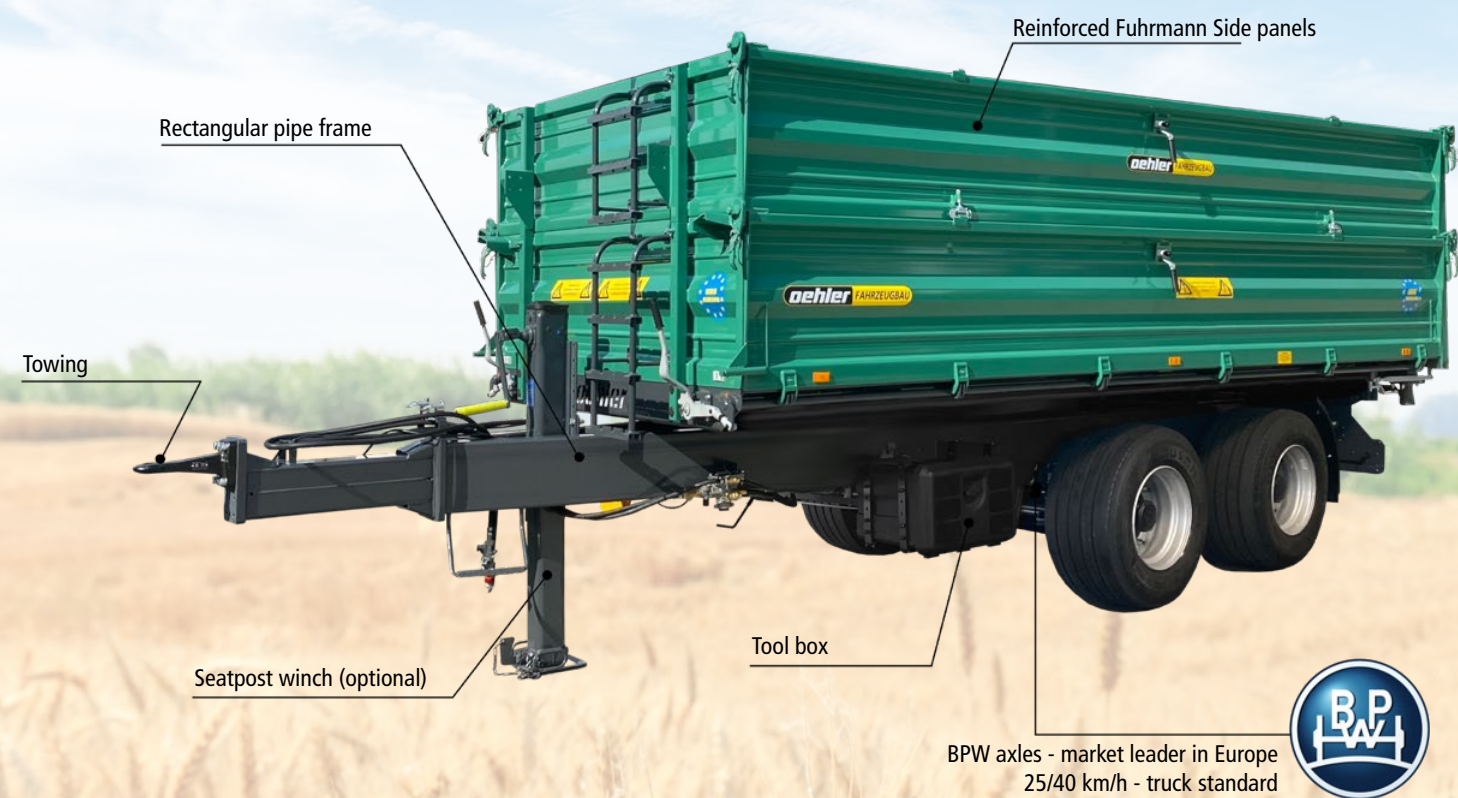
\* Height depending on tyre size (brand)



# 3-way tipping trailers TANDEM

OL TDK 160  
Tandem

## The allrounder



### Standard equipment

- Torsion resistant chassis of rugged rectangular pipe frame, sprung drawbar
- Dual-circuit compressed air brake system, ALB
- Perfect dense construction: 2,5mm wall thickness, side panels with high quality Hestal & Bernhofer fasteners
- Steel side panels (lateral walls and tailboard) with centre stanchions, separately pendant, skirting board, grain slider
- Vertical rubber seal
- Central locking on 3 sides, screwed end stanchions
- BPW axle suitable for 25/40/60 km/h
- Hydraulic support leg - double-acting
- ACC immersion primer and powder coating
- Precision ball tilt bearing with cross-over safety fuse
- Oversized tipping cylinder, cardan bearing with hard chrome plated piston rod and automatic stroke limitation

## Top class for agricultural contractors

OL TDK 200  
Tandem



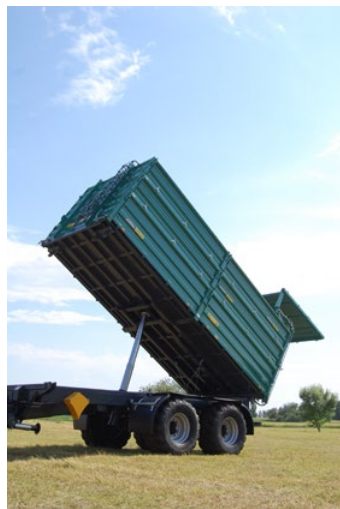
Silage rear wall



Substructure



Silage rear wall



Substructure

Model	OL TDK 160	OL TDK 180	OL TDK 200
Article nr.	100056	103565	100061
Perm. total weight kg	16.000	18.000	20.000
Dead weight approx kg	3.300	3.800	4.600
Bridge mm, LxWxH	5000 x 2360(2300) x 600	5000 x 2360(2300) x 600	5240 x 2420 x 800 x 800
Platform height ca.mm *	1.390	1.390	1.460
Tipping cylinder stages	5	5	5
Max. axle loading capacity kg	18.000	25.000	20.000
Track width approx. mm	1.850	1.850	1.950
Tyres	385/65 R 22,5 retreaded	385/65 R 22,5 retreaded	385/65 R 22,5 retreaded <sup>3</sup>
Brake system	Dual-circuit pneumatic	Dual-circuit pneumatic	Dual-circuit pneumatic, ALB

\* Height depending on tyre size (brand)



# 3-way tipping trailers

Two-axle

The universal vehicles



NEU



Standard equipment

- Torsion resistant chassis of closed stable C-frame
- Dual-circuit compressed air brake system, 4-wheel braked
- Perfect dense construction: 2,5mm thick side panels with high quality Hestal & Bernhofer fasteners
- Steel side panels separately pendant, skirting board, tensioning ropes, grain slider
- Conical bridge, central locking on 3 sides, screwed end stanchions
- BPW axle suitable for 25/40 km/h
- 12 Volt lighting system, power socket at the rear
- ACC immersion primer and powder coating
- Precision ball tilt bearing with cross-over safety fuse
- Oversized tipping cylinder, cardan bearing with hard chrome plated piston rod and automatic stroke limitation

OL ZDK 160  
Two-axle



OL ZDK 120  
Two-axle



ZDK 120 with tarpaulin



ZDK 160 laterally tilted



ZDK 160 tilted backwards

Model	OL ZDK 70 S	OL ZDK 80	OL ZDK 120	OL ZDK 160
Article nr.	101605	100072	100124	132560
Perm. total weight kg	7.000 / 8.000	8.000	12.000	16.000
Dead weight approx kg	2.000	2.600	3.000	3.400
Bridge mm, LxWxH	4070 x 2030 x 500	4500 x 2240(2180) x 500	4500 x 2240(2180) x 600	5000 x 2360(2300) x 600
Platform height ca. mm *	1.080	1.170	1.310	1.340
Tipping cylinder stages	4	4	4	5
Max. axle loading capacity kg	12.000	12.000	12.600	20.000
Track width approx. mm	1.700	1.700	1.700	1.850
Tyres	260/70-15.3 TL 126A8 Flotation+ <sup>1</sup>	13.0/75-16 TL 10 PR AW (135A8) <sup>1</sup>	12.5/80-18/142 A8 <sup>1</sup>	385/65 R 22,5 retreaded <sup>2</sup>
Brake system	Overrun automatic reverse drive, 4-wheel braked	Overrun automatic reverse drive, 4-wheel braked	Dual-circuit pneumatic, 4-wheel braked	Dual-circuit pneumatic, 4-wheel braked

\* Height depending on tyre size (brand)



# 3-way tipping trailers

Two-axle

**Uniline**  
Unique and functional

**OL ZDK 180 U**  
Two-axle



Rugged substructure

### Standard equipment

- Torsion resistant chassis of closed stable C-frame
- Dual-circuit compressed air brake system, 4-wheel braked
- Reinforced continuous steel side panels separately pendant, with skirting board, grain slider and tensioning ropes
- Conical bridge, central locking on 3 sides, screwed end stanchions
- BPW axle suitable for 25/40 km/h
- ALB on one axle in front
- Second oil and compressed air supply relocated to the rear with three-way valve for second trailer
- 12 Volt lighting system, power socket at the rear
- ACC immersion primer and powder coating
- Oversized tipping cylinder, 5-stages, 1850 mm stroke, cardan bearing with hard chrome plated piston rod and automatic stroke limitation



OL ZDK 180 U with attachment and rolling



With bows and tension belts



Lateral tilt

Model	OL ZDK 180 U
Article nr.	115522
Inner platform dimensions	5000 x 2360(2300) x 800 mm
Standard tyres	385/65 R 22,5 retreaded <sup>2</sup>
Dead weight kg	4.000
Total length mm	7.125
Total width mm	2.550
Side walls mm	800
On-top board mm	Optional
Platform height mm	1.420
Base plate	5 mm continuous, unwelded
Track width mm	1.850
Max. axle loading capacity kg	20.000
Tipping cylinder stages	5
Cylinder stroke length	1.875
Cylinder stages mm	75-90-105-120-140
max. Lifting force	27,7 t
max. Operating pressure	180 bar
Required oil quantity	18,6 l

\* Height depending on tyre size (brand)



# 3-way tipping trailers

Two-axle

## ZDK 180 UW viticulture version for viticulture and grain harvesting

OL ZDK 180 UW  
Two-axle



### Advantages that might convince you:



- Extremely low platform height 1,26 m
- Very good overloading height 2,46 m
- Low pressure tyres
- Convenient operation of the hydraulic side panel opening
- With two cylinders on each side (left and right side)
- Side panel lifting springs infront, usable for grain transportation (optional)
- Duo-matic trailer on tractor side (optional)



Model	ZDK 180 UW
permitted total weight kg	18.000 kg
Tyres	455/40 R 22,5 160J TL, AgricultureMAX MZL
Bridge mm, LxWxH	5010 x 2300 (2360) x 600 + 600
Total length mm	7115
Total width mm	ca. 2520
Side panels mm	600 + 600
Platform height mm	1260
Side panel reinforcement vineyard version	Standard
Hydraulic Side panel opening on both sides, left and right, with 2 cylinders on each side	Option
Lifting springs	Option

\* Height depending on tyre size (brand)



# 3-way tipping trailers

Two-axle



The incomparable top class  
for professionals

Rolling tarpaulin with platform, central pipe laterally foldable, draw-bar height adjustment

**OL ZDK 180**  
Two-axle

Closed C frame construction, torsion resistant - truck standard

Reinforced Fuhrmann Side panels

Automatic trailer coupling (optional)

Compressed air supply and second oil supply optionally relocated to the rear

Widely spaced tilt bearings with additional support provide high stability

Base plate 5mm - continuous, unwelded

Stable underride protection

Platform pallet width 2,42m with vertical rubber seal

5-stages lifting cylinder, hard chrome plated including cardan bearing

BPW axles - market leader in Europe  
25/40/60 km/h - truck standard

ALB-regulation on both axes

Parabolic suspension for high driving comfort



Model	OL ZDK 180
Article nr.	100076
Perm. total weight kg	18.000
Dead weight approx kg	4.300
Bridge mm, LxWxH	5240x2420x800x800
Platform height ca.mm*	1.420
Tipping cylinder stages	5
Max. axle loading capacity kg	23.000
Track width approx. mm	1.950
Tyres	385/65 R 22,5 retreaded <sup>3</sup>
Brake system	Dual-circuit pneumatic, 4-wheel braked

\* Height depending on tyre size (brand)



# 3-way tipping trailers

Two-axle

**OL ZDK 180 P**  
Two-axle



Lateral side panels horizontally divided



Open portal gates



## THE NEW GENERATION

### The lightweight with plastic side panels

#### Advantages of plastic panels:

- Weight reduction of up to 10%, depending on version
- 100% UV resistant
- Extreme stability: plastic is also used more and more for truck box bodies
- Over 20m³ capacity
- Available in two axle or tandem version

#### Standard equipment

- Torsion resistant chassis of closed stable C-frame
- Dual-circuit compressed air brake system, 4-wheel braked
- Perfect dense construction: 2,5mm thick side panels with high quality Hestel & Bernhofer fasteners
- Reinforced plastic portal gates with centre stanchion (detachable), grain slider
- Pallet sized bridge, central locking on 3 sides, 12 pallets
- Vertical and horizontal rubber seal (platform)
- BPW axle suitable for 25/40/60 km/h
- ALB on both axles
- Second oil and compressed air supply relocated to the rear with three-way valve for second trailer
- 12 Volt lighting system, power socket at the rear
- Base plate ACC immersion primed and powder coated
- Side panels 2K lacquered
- Precision ball tilt bearing with cross-over safety fuse
- Oversized tipping cylinder, cardan bearing with hard chrome plated piston rod and automatic stroke limitation

Model	OL ZDK 180 P
Article nr.	104458
Perm. total weight kg	18.000
Dead weight approx kg	4.000
Bridge mm, LxWxH	5270x2420x1600
Platform height ca.mm*	1.420
Tipping cylinder stages	5
Max. axle loading capacity kg	23.000
Track width approx. mm	1.950
Tyres	385/65 R 22,5 retreaded³
Brake system	Dual-circuit pneumatic, 4-wheel braked

\* Height depending on tyre size (brand)



# 3-way tipping trailers

Two-axle

## Chipper truck with hydraulic side panel

**OL ZDK HW 180**  
Two-axle



Lateral tilt to the left



Lateral tilt to the right



Tilting backwards

## for wood chip, silage, manure or grain transportation

### Standard equipment

- Torsion resistant chassis of closed stable C-frame
- Dual-circuit compressed air brake system, 4-wheel braked
- Perfect dense construction: 2,5mm wall thickness, side panels with high quality Hestel & Bernhofer fasteners
- Reinforced continuous steel side panels, left in driving direction: hydraulic side panels, right in driving direction and rear wall: separately pendant, grain slider
- Pallet sized bridge, Central locking on 3 sides, screwed end stanchions
- Vertical rubber seal for hydraulic wall
- BPW axle suitable for 25/40/60 km/h
- ALB on both axles
- Second oil and compressed air supply relocated to the rear with three-way valve for second trailer
- 12 Volt lighting system, power socket at the rear
- ACC immersion primer and powder coating
- Precision ball tilt bearing with cross-over safety fuse
- Oversized tipping cylinder, 5-stages, 1875 mm stroke, cardan bearing with hard chrome plated piston rod and automatic stroke limitation



Optionally with grain screw



Reinforced frame construction

Model	OL ZDK HW 180
Article nr.	130909
Perm. total weight kg	18.000
Dead weight approx kg	4.600
Bridge mm, LxWxH	5000x2420x800x800, Palettenmaß
Platform height approx. mm*	1.420
Tipping cylinder stages	5
Max. axle loading capacity kg	22.000
Track width approx. mm	2.050
Tyres	385/65 R 22,5 retreaded <sup>3</sup>
Brake system	Dual-circuit pneumatic, 4-wheel braked

\* Height depending on tyre size (brand)



# 3-way tipping trailers

Two-axle



We show greatness  
for large farms and agricultural contractors

OL DDK 240  
Three-axle



Rear view

## Standard equipment

- Loading capacity from 28m³ up
- Extreme stability, 5mm continuous unwelded base plate
- ACC immersion primer and powder coating
- Tarpaulin attachment optionally possible
- Maximum speed up to 60 km/h
- LED lamps optionally available
- Dual-circuit compressed air brake system, 6-wheel braked
- Torsion resistant chassis of rugged rectangular pipe frame
- Perfect dense construction: 2,5mm thick side panels with high quality Hestál & Bernhofer fasteners
- Reinforced steel side panels with centre stanchions and grain slider
- Pallet sized bridge, central locking on 3 sides, screwed end stanchions (16 pallets)
- Vertical rubber seal
- BPW axle suitable for 25/40/60 km/h
- ALB standard
- 12 Volt lighting system, power socket at the rear, Optionally with LED lamps
- ACC immersion primer and powder coating, 2K lacquering
- Precision ball tilt bearing with cross-over safety fuse
- Oversized tipping cylinder, 5-stages, 3025mm stroke, cardan bearing with hard chrome plated piston rod and automatic stroke limitation



Model	OL DDK 240
Article nr.	100083
Perm. total weight kg	24.000
Dead weight approx kg	6.800
Bridge mm, LxWxH	7250 x 2420 x 800 x 800
Platform height approx. mm*	1.510
Tipping cylinder stages	5
Max. axle loading capacity kg	verst. Parabolic suspension 11.500
Track width approx. mm	1.950
Tyres	385/65 R 22,5 rd.
Brake system	Dual-circuit pneumatic, 6 wheeld gebremst



# Bale transport trailer

Two-axle / Three-axle

## Bale trailers from 8.000 - 24.000 kg

**OL ZDK 120 B**  
Three-axle

- Large loading capacity, optionally with extendable frame
- 25/40 km/h Axle
- Closed C-frame
- Rugged construction



OL ZDK 120 B - Two-axle bale trailer



Side panel grille, foldable front and rear



OL DDK 240 B -Three-axle bale trailer

**OL DDK 240 B**  
Three-axle



DDK 240 B with stanchions - 24t three axle trailer

## Novelty: The combined solution - bale trailers with stanchions

Model	OL ZDK 80 B	OL ZDK 120 B	OL ZDK 180 B	OL DDK 240 B
Article nr.	115526 / 115527	115528 / 115529	119563	104133
Total weight kg	8000	12000	18.000	24000
Platform length mm	8000 / 9000	8.010	9.000	9900
Loading length mm	9.120 / 8.800	9.380 / 9.100	10.770 / 9.990	10.000
Total width mm	2.475	2.450	2450	2.400
Dual-circuit pneumatic brake system	-	Standard	Standard	Standard
Overrun automatic reverse drive system	Standard	-	-	-

## „Krassort“- System

## The patented load securing system for more safety

**Patentiertes System**  
Patentnummer: EP 2141 979



OL DDK 240 BK / Three-axle bale trailer with load securing system „Krassort“



Hydraulic clamping gate adjustment



- High safety during transport of round and square bales
- No time wasting securing with lashing belts necessary
- Easy loading and unloading due to hydraulic clamping gates
- Transportation of up to 32 round and square bales possible
- Bale trailer's chassis made of closed C-frame that provides maximum stability
- More safety due to check valve
- Including DEKRA load securing certificate



Parabolic suspension

Vehicle front panel control



Rugged substructure



Model	OL DDK 240 BK
Article nr.	130909
Perm. total weight kg	24.000
Platform length mm	10.300
Loading length mm	10.300
Total width mm	2.488
Brake system	Dual-circuit pneumatic
Hydraulically adjustable clamping gate	Standard
Clamping gate height mm	2.575



# Bale transport trailer

Three-axle System Krassort

Patentiertes System  
Patentnummer: EP 2141 979



## Loading of up to 32 bales

NEU

Unique loading system:  
lowerable to platform height



Adjustable securing bar for large box transport



Adjustable securing bar for large box transport



Loading with square bales



Transportation of square bales



Safe load securing





# Conversion system Three-axle



## Cross-seasonal use

### 1 vehicle - 4 versions

**OL DDK 240 BKW**  
Three-axle

**NEU**

**Advantages that might convince you:**

- 24.000 kg permitted total weight
- Quick changing system with twist locking
- Openings with cover for insertion ramps - all standard
- Lashing points installed as standard in the frame

**Basic vehicle including:**

- Preparation stanchions
- Preparation side panels
- Preparation clamping gate
- Twist locking system / Closure for quick conversion system



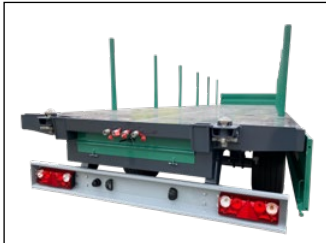
Lashing points



Twist Locking System



Openings insertion ramps



rear lights



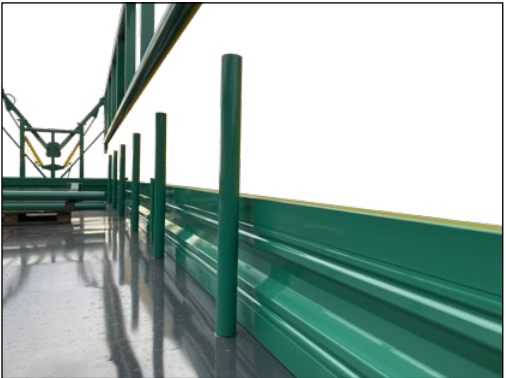
Model	OL DDK 240 BKW + Holzrückefahrzeug
Stanchions	6 Pair of stanchions
Stanchion height mm	1.000
Front grille mm	1.500
Loading length mm	9.955
Loading width inner stanchions	2.200
Total length mm	11.945
Total width mm	2.490
Platform length mm	10.280
Platform width mm	2.480
Total length mm	11.945
Dead weight stanchions approx ca.	450 kg



Detachable gate

Model	OL DDK 240 BKW + hydraulic Clamping gate
Clamping gate	Lateral hydr clamping gate, adjustable
Clamping gate height mm	2.565
Loading capacity bales ø 1,25m	34 Bales
Ladder	Integrated into Clamping gate
Outrigger with wheels	Integrated into Clamping gate
Inner loading length mm	10.000
Total length mm	11.945
Total width mm	2.490
Platform length inkl. Gate mm	10.735
Platform width mm	2.480
Weight gate mounting approx.	2.200 kg

Model	OL DDK 240 BKW
permitted total weight kg:	24 t
Standard tyres:	435/50 R 19,5 Neurad
Empty weight ca.:	5.900 kg
Platform length:	10.280
Platform width:	2.480
Loading length:	9.955 mm
Total width:	2.490 mm
Track width approx. mm	2.050
Empty platform height ca.:	1.240 mm
Brake system	Standard /6 wheel with individual ALB regulation for front and rear axle



Side panels, stanchions, hydraulic clamping



Model	OL DDK 240 BKW + Side panels
Side panels	500 mm , Foldable (downwards)
Dead weight on-top Side panels approx kg	420
Inner loading length mm	9.815
Total length mm	11.945
Total width mm	2.550
Platform length mm	10.735
Inner platform width mm	2.425
Outer Platform width mm	2.550



# Box transportation

Two-axe / Three-axe

Box transportation trailer 8.000 - 24.000 kg  
with patented load securing system

DDK 240 BK Box  
Three-axe

NEU



Krassort - system

ZDK 180 BK Box  
Two-axe



## Compatible with different box sizes 580 / 630 / 760 / 850 mm

- High safety during transport of large boxes and common boxes
- Several boxes can be stacked on top of each other
- Loading and unloading possible on each side
- Chassis made of closed C-frame that provides maximum stability
- Including DEKRA load securing certificate



Hydraulic clamping gate adjustment



Hydraulic clamping gate adjustment



Model	OL ZDK 180 BK - Box	OL DDK 240 BK - Box
Article nr.	122889	122891
Total weight kg	18.000	24.000
Platform length mm	9.810	10.300
Loading length mm	5.000	10.300
Total width mm	2.488	2.488
Brake system	Dual-circuit pneumatic	Dual-circuit pneumatic
Hydraulically adjustable clamping gate	Standard	Standard



# Tipping body trailer

TANDEM



TMK 160  
Tandem



## The professional trough

- Rugged, torsion resistant frame construction
- Hydraulic rear wall with check valve, readjustment option and rubber gasket
- Trough wall thickness 4 mm
- 5 mm Base plate
- BPW axle suitable for 25/40 km/h
- Conical halfpipe dumping body ensures unproblematic sliding
- Hard chrome plated lifting cylinder with cardan bearing
- Stable underride protection
- Also available as single-axle trailer (13t)
- Sprung drawbar
- Dual-circuit compressed air brake system
- Hydraulic support leg
- 12 Volt lighting system, power socket at the rear
- 2K lacquering (trough attachment)
- Oversized tipping cylinder, cardan bearing with hard chrome plated piston rod and automatic stroke limitation valve
- Trough also available in HARDOX



Stable trough substructure

Model	OL TMK 130	OL TMK 150	OL TMK 160 Sumo	OL TMK 180 Sumo
Article nr.	103632	103556	100089	101656
Perm. total weight kg	13.000	15.000	16.000/17.000	18.000/19.000
Dead weight approx kg	3.000	3.500	4.500	4.800
Bridge mm, LxWxH	4500 x 2260(2200)x 1300	4500 x 2260(2200) x 1300	5000 x 2240(2300)x 1500	5000 x 2240(2300)x 1500
Platform height approx. mm*	1.120	1.300	1.360	1.360
Tipping cylinder stages	5	5	5	5
Max. axle loading capacity kg	12.400	18.000	18.000	18.000
Track width approx. mm	1.700	1.850	1.850	1.850
Tyres	12.5/80-18/142 A8²	385/65 R 22,5 retreaded	385/65 R 22,5 retreaded²	385/65 R 22,5 retreaded²
Brake system	Dual-circuit pneumatic	Dual-circuit pneumatic	Dual-circuit pneumatic	Dual-circuit pneumatic

\* Height depending on tyre size (brand)



# Tipping body trailer

TMK 203  
Tandem



## The absolute star among the troughs

### Standard equipment

- Torsion resistant chassis of stable rectangular pipe frame, sprung drawbar
- Dual-circuit compressed air brake system
- ALB on both axles
- ACC immersion primed, powder coated
- Lateral walls 4 mm
- Base 5 mm
- Inspection window
- BPW axle suitable for 25/40/60 km/h
- Hydraulic support leg
- 12 Volt Lighting system, power socket at the rear
- 2K lacquering (trough attachment)
- Oversized tipping cylinder, cardan bearing with hard chrome plated piston rod and automatic stroke limitation valve

TMK 202  
Tandem



Conical trough

Model	OL TMK 202	OL TMK 202 S	OL TMK 203
Article nr.	103621	122548	103623
Perm. total weight kg	20.000 - 22.000	20.000 - 24.000	20.000 - 24.000
Dead weight approx kg	5.500	5.910	6.490
Bridge mm, LxWxH	5800 x 2300(2240) x 1500	6500 x 2300(2240) x 1500	7000 x 2300(2240) x 1500
Platform height approx. mm*	1.380	1.380	1.380
Tipping cylinder stages	5	5	6
Max. axle loading capacity kg	20.000	20.000	20.000
Track width approx. mm	1.950	1.950	1.950
Tyres	385/65 R 22,5 retreaded <sup>3</sup>	385/65 R 22,5 retreaded <sup>3</sup>	385/65 R 22,5 retreaded <sup>3</sup>
Brake system	Dual-circuit pneumatic	Dual-circuit pneumatic	Dual-circuit pneumatic



# Tipping body trailer

TRIDEM

TMK 340  
Tridem



## The transport giants Tridem-Tipping body trailer

### Standard equipment

- Trough 5mm continuous base plate, walls 4mm
- Hydraulic axle support
- Sturdy lateral stanchions and box Professionalle on the upper edge of the trough guarantee incomparable stability
- Axle with ALB and forced steering as standard
- Sprung drawbar
- Hydraulic support leg
- Hydraulic tailgate - double-acting cylinder
- Parabolic spring unit with hydraulic support - optionally
- High support load gives the transport colossus good off-road capability



Model	OL TMK 340
Article nr.	113331
Perm. total weight kg	34.000
Dead weight approx kg	9.200
Bridge mm, LxWxH	8000 x 2300(2240) x 1500
Platform height approx. mm*	1.470
Tipping cylinder stages	6
Max. axle loading capacity kg	36.000
Track width approx. mm	2.150
Tyres	385/65 R 22,5 retreaded
Brake system	Dual-circuit pneumatic, 6 wheel braked

\* Height depending on tyre size (brand)



# Tipping body trailer Tandem

TDK 180 N  
Tandem

3-way tipping trailer  
with **HARDOX** Base / walls

NEU



Particularly extensive standard equipment::

- 5 mm HARDOX Base plate, 8 Lashing eyes on Base plate
- 600 mm HARDOX Side panel, Side panel lifting springs on the right and on the left, hydraulic ballast flap
- Torsion resistant chassis of rugged rectangular pipe frame, lower construction
- Dual-circuit compressed air brake system
- BPW axle suitable for 25/40 km/h
- Seat post winch
- Continuous oil and compressed air line to the rear
- ACC immersion primed, powder coated
- Oversized tipping cylinder, 5-stages, 1875 mm stroke, cardan bearing with hard chrome plated piston rod and automatic stroke limitation
- Lamp protection grille for lights
- Registration papers for 40 km/h
- Fender
- Tool box, Wheel chocks



Model	OL TDK 180 N - HARDOX
Article nr.	132494
Perm. total weight kg	18.000
Dead weight approx kg	3.890
Bridge mm, LxWxH	5000x2360 (2300) x 600
Platform height ca.mm*	1.170
Tipping cylinder stages	5
Max. axle loading capacity kg	á 9.000
Track width approx. mm	1.850
Tyres	435/50 R 19,9 ET 0
Brake system	Dual-circuit pneumatic, 4-wheel braked



# Stone trough TANDEM



## Stone trough for road construction and demolition

TMK 190  
Tandem



### Exceptionally stable and indestructible

#### Advantages that might convince you:

- 25/40/60 km/h Chassis
- Automatic tailboard
- Base plate 8 mm also available in HARDOX
- Reinforced lateral stanchions 6mm
- Exceptionally stable trough substructure
- Hydraulic support leg
- Durable maintenance-free axle unit
- Stable underride protection
- Maximum stability
- Torsion resistant chassis of rectangular pipe frame
- Stable axle construction
- Oversized lifting cylinder
- Large size tilt bearings
- Conical bridge
- 12 Volt lighting system, power socket at the rear
- 2K lacquering
- Cylinder, 5-stages, 1850mm stroke, hard chrome plated piston rod, cardanic bearing and automatic stroke limitation



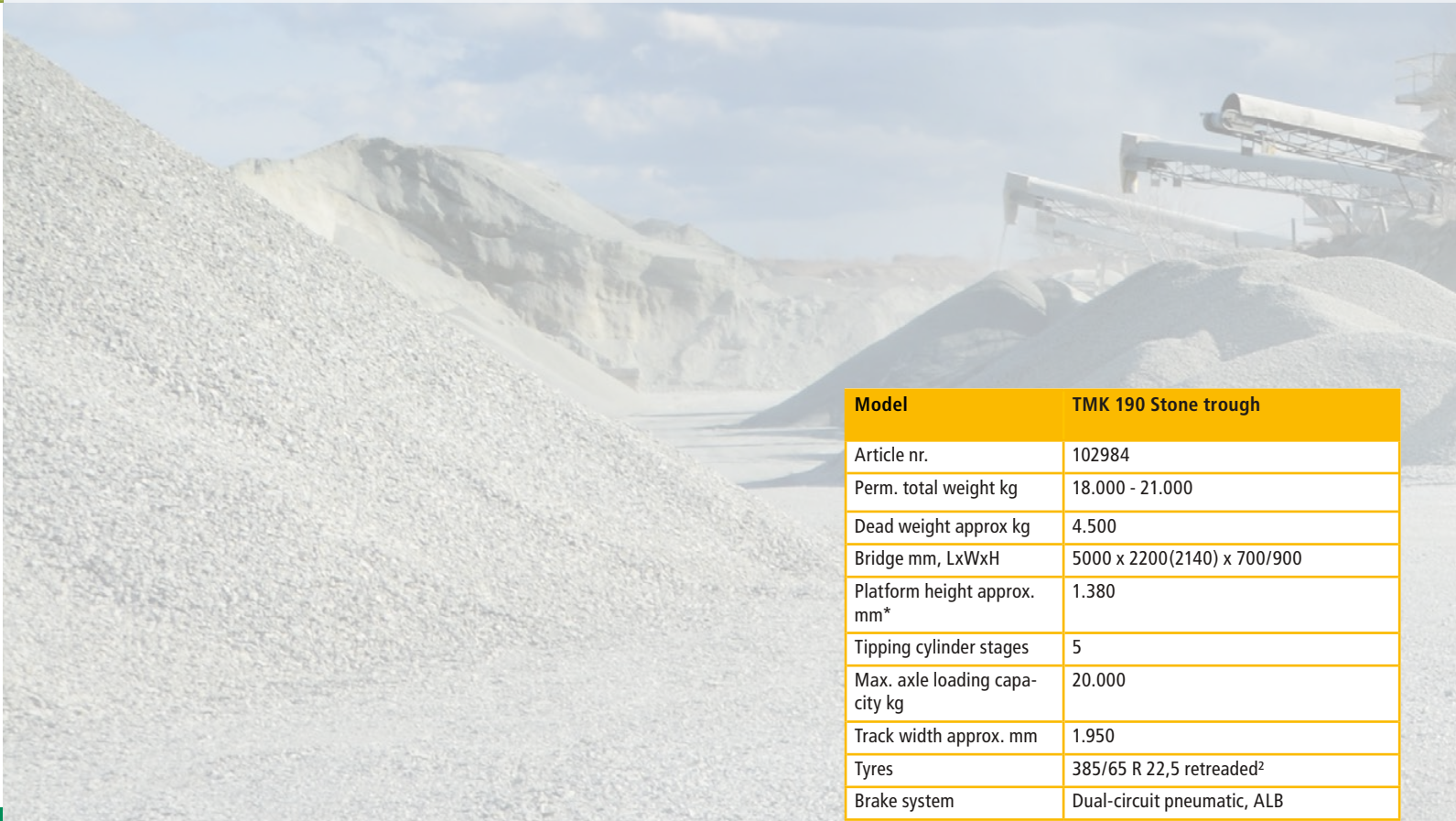
Rear view



Hydraulic rear wall



TMK 190 Stone tipping body trailer tilted, conical bridge wider at the rear than in front



Model	TMK 190 Stone trough
Article nr.	102984
Perm. total weight kg	18.000 - 21.000
Dead weight approx kg	4.500
Bridge mm, LxWxH	5000 x 2200(2140) x 700/900
Platform height approx. mm*	1.380
Tipping cylinder stages	5
Max. axle loading capacity kg	20.000
Track width approx. mm	1.950
Tyres	385/65 R 22,5 retreaded <sup>2</sup>
Brake system	Dual-circuit pneumatic, ALB

\* Height depending on tyre size (brand)



# Halfpipe tipping body trailer TANDEM

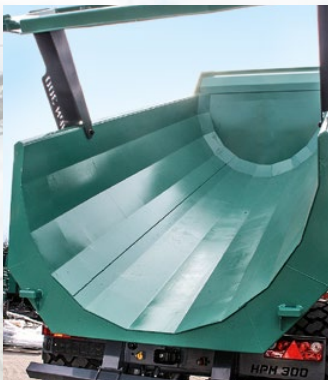
Low weight - extreme stability

## Perfect for soil transportation (sand/gravel)

- Large side independent compensation
- Constant ride height, regardless of the loading condition
- Central lubrication system
- High load capacity plain bearing bush for centre axle beam
- Asymmetric pendulum structure for optimum driving characteristics
- Pendulum units are suitable for both off-road and on-road applications.

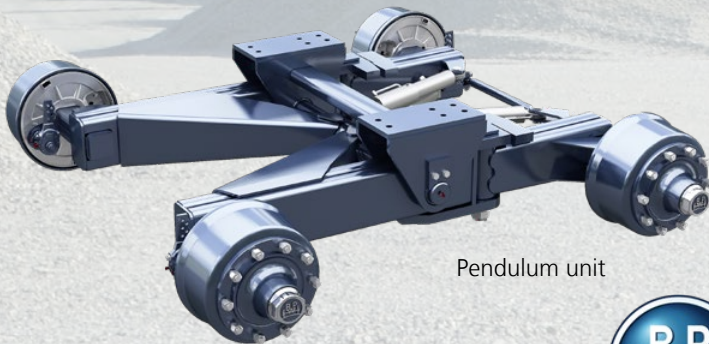
Trough: 6mm **HARDOX** 450  
Trough Professionalle: 6mm **DOMEX** 700  
HIGH STRENGTH STEEL

**OL HPM 300**  
Tandem



Half round trough

HPM 300 Tilt angle 55°



Pendulum unit

- BPW 30t Pendulum unit optional



- Longer service life due to extreme material hardness level (HARDOX450/DOMEX700) (HARDOX450/DOMEX700)
- Very wear resistant steel plate
- Compound unit up to 32 t.
- Heavy duty trough max. 105 km/h
- Extreme Tilt angle
- Low wear even under heavy mechanical loads
- Closed / low-wear ball head tilting bearing

Model	OL HPM 300
Article nr.	105126
Perm. total weight kg	22.000
Perm. total weight kg (innerbetrieblich)	25.000
Dead weight approx kg	7.000
Bridge mm, LxWxH	5.200 x 2.210 (2280) x 1.300
Transportation capacity m³ (water measures)	12,5
Platform height approx. mm*	1.310
Tipping cylinder stages	4
Max. axle loading capacity kg	32.000
Track width approx. mm	1.950
Tyres	560/60-22.5 TL 167 A8 Flotation
Dual-circuit pneumatic brake system	Standard

\* Height depending on tyre size (brand)



# Hook lift trailer

Single-axle



## Maneuverable Single-axle-Hook lift trailer with particularly narrow track

OL EHKL 80  
Single-axle



- BPW Axle 25/40 Km/h
- Compatible with all standard container types



- High maneuverability due to particularly narrow track
- Low roller height

### Optional attachments



Roll-off container trough



Flatbed Roll-off container with crane



Flatbed Roll-off container



Flatbed Roll-off container



Support wheel and towing eye



OL EHKL 80 Container pickup position



Container pick-up hitch



OL EHKL 80 Underride protection with lamps



Covers



Fender and Side collision protection

Model	OL EHKL 80
Article nr.	117863
Perm. total weight kg	8.000
Support load Towing eyelet ca. kg	1.500
Weight ca. kg	1.800
Load capacity ca. kg	4.200
Lifting capacity ca. kg	5.100
Hook height ca. mm	900
Container thrust arm with stroke approx mm	900
Velocity	25 km/h
Operating pressure ca. bar	200
Oil requirement ca. ltr.	24.8
Tyres	480/45-17 146 A8
Possible container length approx. mm	3.500



# Hook lift trailer TANDEM



## Tandem Hook lift trailer THKL 130 for agriculture, forestry, groundworks and rubble

OL EHLK 80  
Single-axle



OL THKL 130 Fender and Side collision protection

- Compatible with all available standard container types
- Speeds: 25/40 km/h
- Loading and unloading of the load can be carried out conveniently at ground level



OL THKL 130 with crane OL 6300 Z



Hook lift with built up Z-crane (optionally)



Mounting plate for crane superstructure



OL THKL 130 extendable underride protection

Model	OL THKL 130
Article nr.	120260
Perm. total weight kg	13.000
Support load Towing eyelet ca. kg	2.000
Weight ca. kg	2.750
Load capacity ca. kg	10.250
Lifting capacity ca. kg	8.000
Hook height ca. mm	900
Rollenhöhe ca. mm	970
Operating pressure ca. bar	200
Oil requirement ca. ltr.	40
Tyres	400/60-15.5 TL 145 A8 Flotation+
Possible container length approx. mm	3.400 - 5.200, optimum at 4.700



# Hook lift trailer TANDEM

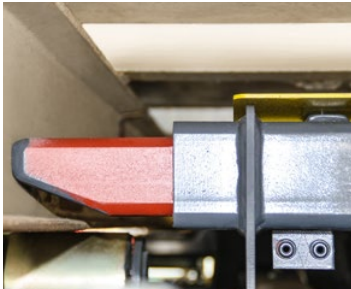
## Heavy load Hook lift trailer THKL 200 for agriculture, forestry, groundworks and rubble



Container cover



Inner locking



Covering roll



Hydraulic drawbar suspension



- Hydraulic drawbar suspension
- Speeds: 25/40/60 km/h
- **HYVA**<sup>®</sup> LIFT Lift hook lift unit, high lifting and tilting force
- Low dead weight - high payload
- Withstands even the toughest loads
- Compatible with all available standard container types
- Hydraulic locking standard
- Available with different speeds
- Hook made of WELDOX 700 guarantees high durability
- Loading and unloading of the load can be carried out conveniently at ground level
- Low lifting angle due to 1200mm thrust arm

Model	OL THKL 200
Article nr.	106489
Perm. total weight kg	20.000 - 22.000
Support load Towing eyelet ca. kg	2000/3000/4000
Weight ca. kg	4.800
Load capacity ca. kg	15.500
Lifting capacity ca. kg	18.000
Hook height ca. mm	1.570
Container thrust arm with stroke approx mm	1.200
Velocity	40 km/h
Operating pressure ca. bar	200
Oil requirement ca. ltr.	80-85
Tyres Standard	385/65 R 22,5
Possible container length approx. mm	4.200 - 6.500, optimal 6.000



# Hook lift trailer TRIDEM

## Heavy load Hook lift trailer 30t with forced steering 1st and 3rd axle



OL THKL 300  
Tridem



THKL 300 / Tridem hook lift with trough



Sand-transport



Rear view



Double cylinder



THKL 300 / Tridem Hook lift with Container



Container pick-up



Joystick steering (optional)

- Hydraulic drawbar suspension
- Speeds: 25/40/60 km/h
- **HYVA**<sup>LIFT</sup> Hook lift unit, high lifting and tilting force
- High payload
- Withstands even the toughest loads
- Compatible with all available standard container types
- Hydraulic locking standard
- Available with different speeds
- Hook made of WELDOX 700 guarantees high resistance
- Loading and unloading of the load can be carried out conveniently at ground level

Model	OL THKL 300
Article nr.	113233
Perm. total weight kg	30.000
Support load Towing eyelet ca. kg	3000/4000
Weight ca. kg	6.500
Load capacity ca. kg	23.500
Lifting capacity ca. kg	26.000
Hook height ca. mm	1.570
Container thrust arm with stroke approx mm	1.500
Velocity	40 km/h
Operating pressure ca. bar	200
Oil requirement ca. ltr.	90-100
Tyres	385/65 R 22,5 retreaded <sup>3</sup>
Possible container length approx. mm	5.100 - 7.500



# Manure spreader

Single-axle

Manure spreader with „Danfoss“ hydraulic  
„Let the quality decide“



**OL STE 60**  
Single-axle



Ladder



Spreading unit protection



PTO connection for spreading disc



Gearbox and „Danfoss“ oil motor



OL STE 80 with sluce gate



Scraper floor chain



## Approved spreading accuracy

- Fine spreading unit with 4 vertical rollers
- Spreading unit:
  - detachable
  - electronically balanced
  - screwed ripping tines (rotatable)
- Galvanized, rugged scraper floor chains
- Reinforced, screwed scraper floor strips
- „Danfoss“ hydraulics with continuously adjustable speed forwards + backwards
- Wear-resistant floor panels (resin-coated plywood)



continuously adjustable forward and backward flow of scraper floor



Automatic scraper floor locking device

Model	OL STE 60	OL STE 70	OL STE 80
Article nr.	100159	100160	100162
Perm. total weight kg	6.000	7.000	8.000
Loading platform (inner dimensions), ca. L x W x H mm	4160x1750x500	4160 x 1750 x 500	4700 x 1900 x 600
Add. superstructure Side panel mm	400	400	500
Scraper floor chains	2 Chains	2 Chains	4 Chains
BPW suitable for 40 km/h, max. capacity kg at 25 km/h	6.500	8.000	Sprung tandem 12.000
Track width mm	1.500	1.700	1.700
Tyres	13.0/75-16 TL 10 PR AW (135A8)	12.5/80-18/142 A8¹	500/50-17 149 A8(500/50-17/14PR)¹
Overrun automatic reverse drive system	Standard	-	Standard
Oil brake system	-	Optional	-
Dual-circuit pneumatic brake system	-	Standard	-
4 vertical rollers (wide spreading unit)	Standard	Standard	Standard
Hydraulic scraper floor drive with quick draining, infinitely variable, feed with forward and return	Standard	-	Standard
Spreading unit opening mm	1.000	1.000	1.200
Spreading unit height max. mm	1.100	1.100	1.360
Operating width (depending on manure texture) mm and lateral ladder	max. 7000	max. 7000	max. 8000
All protective devices, protective grille at the front	Standard	Standard	Standard
Lighting system and wheel chocks	Standard	Standard	Standard



# Manure spreader

Single-axle

## The professional spreader trough

- very robust model
- Flat triangular spread pattern with very good overlap
- up to 17 m<sup>3</sup> capacity

**OL STE 140**  
Single-axle



continuously adjustable forward and backward flow speed of scraper floor



2 vertical spreading rollers, fine spreading unit



Semi automatic chain tensioning device



Model	OL STE 140
Article nr.	106444
Perm. total weight kg	14.000
Loading platform (inner dimensions), ca. L x W x H mm	5500 (2000-1450) x 1350
Add. superstructure Side panel mm	250
Scraper floor chains	2 Chains
ADR suitable for 40 km/h, max capacity at 25 km/h	13.000
Track width mm	2.250
Tyres	23.0 - 26
Overrun automatic reverse drive system	-
Oil brake system	Optional
Dual-circuit pneumatic brake system	Standard
4 vertical rollers (fine spreading unit)	-
2 vertical rollers (wide spreading unit)	Standard
Hydraulic scraper floor drive with quick draining, infinitely variable, feed with forward and return	Standard
Spreading unit opening mm	1.600
Spreading unit height max. mm	1.600
Operating width (depending on manure texture) mm and lateral ladder	max. 12000
All protective devices, protective grille at the front	Standard
Lighting system and wheel chocks	Standard



# Manure spreader TANDEM



OL STT 130  
Tandem



4 Vertical spreading rollers



OL STT 80 with sluice gate and hydraulic spreading protection



Automatic scraper floor clamping device

## High loading capacity and spreading accuracy of highest quality



### Tested Spreading accuracy

- Fine spreading unit with 4 vertical rollers
- Spreading unit: - detachable
  - electronically balanced
  - screwed ripping tines (rotatable)
- Galvanized, rugged scraper floor chains
- Reinforced, screw-fastened scraper floor strips
- „Danfoss“ hydraulics with continuously adjustable speed forwards + backward
- wear-resistant floor (Resin-coated plywood)
- precise and durable construction
- 4 scraper floor chains (hardened) 10x35mm,
- 12t tearing force guided in U-profiles, very low wear
- Forward and backward with quick unloading device



Scraper floor strips, hydraulic sluice gate

Model	OL STT 80	OL STT 130
Article nr.	100163	103630
Perm. total weight kg	8.000	13.000
Loading platform (inner dimensions), ca. L x W x H mm	4.700 1.900 x 600	4.700 x 1.900 x 600
Add. superstructure Side panel mm	500	500
Scraper floor chains	4 Chains	4 Chains
BPW suitable for 40 km/h, max. capacity kg at 25 km/h	Sprung tandem 12.000	Sprung tandem 12.400
Track width mm	1.700	1.700
Tyres	500/50 - 17 146 A8 13.0/75-16 10 PR	12.5/80-18/12PR
Overrun automatic reverse drive system	Standard	-
Oil brake system	-	Optional
Dual-circuit pneumatic brake system	-	Standard
4 vertical rollers (fine spreading unit)	Standard	Standard
2 horizontal rollers (wide spreading unit)	-	-
Hydraulic scraper floor drive with quick draining, infinitely variable, feed with forward and return	Standard	Standard
Spreading unit opening mm	1.200	1.200
Spreading unit height max. mm	1.360	1.360
Operating width (depending on manure texture) mm and lateral ladder	max. 8.000	max. 8.000
All protective devices, protective grille at the front	Standard	Standard
Lighting system and wheel chocks	Standard	Standard



# Manure spreader TANDEM



## Manure spreader with wide spreading unit



The star of the **AGRI TECHNICA**  
THE WORLD'S NO. 1

### Advantages that might convince you:

- Hydraulic sluice gate installed standardly
- 11 cubic meters loading capacity
- Exact spreading distribution even with low application rates
- Especially suitable for dry chicken manure, compost and other substances

### Chassis

- Stable profile pipe frame
- Tandem spring unit for particularly high driving comfort
- BPW axles 25/40 km/h optionally
- Haldex, 4-wheel pneumatic brake
- TÜV 25 km/h – 40km/h as option

### Universal wide spreading unit

- 2 horizontal milling rollers with 2 spreading plates
- HARDOX ejector blade
- Spreading unit with quick exchange system
- Sluice gate with dosage display
- 4 scraper floor chains (hardened) 10x35mm,
- 12t tearing force guided in U-profiles, very low wear
- Forward and backward with quick unloading device
- Reinforced, screwed on scraper floor strips

Model	OL STT 130 M
Article nr.	128631
Perm. total weight kg	13.000
Loading platform (inner dimensions), ca. L x W x H mm	4.710 x 1.950 x 1.200
Scraper floor chains	4 Chains
BPW suitable for 40 km/h, max. capacity kg at 25 km/h	Gefedert 12.400
Track width mm	1.700
Tyres	12.5/80-18 142 A8
Dual-circuit pneumatic brake system	Standard
2 horizontal rollers (wide spreading unit)	Standard
Spreading unit passage mm	1.940
Spreading unit height max. mm	1.200
Operating width (depending on manure texture) mm and lateral ladder	15-18
All protective devices, protective grille at the front	Standard
Lighting system and wheel chocks	Standard



# Manure spreader TANDEM



STT 180 – 18 t Manure spreader • also available with 21t or 24t permitted total weight

## High loading capacity and Spreading accuracy of the highest order

### The professional universal wide spreader:

- Robust, easy handling
- Solid steel tank with 4mm wall, 5mm floor
- Hydraulic sprung drawbar for high driving comfort
- Scraper floor (reinforced) with 4 screwed on scraper floor strips and hydraulic forward and backward
- Spreading unit with cardan drive (no chains, less wear)
- **HARDOX**® ejector blades



Two spreading



STT180 with lateral spreading border



STT 180 Rear view



Drive via cardan shaft



Chain tensioning device



STT 180 wide spreading unit



Scraper floor strips, hydraulic sluice gate



Model	OL STT 180
Article nr.	117864/118438/118439
Perm. total weight kg	18.000/21.000/24.000
Loading platform (inner dimensions), ca. L x W x H mm	5.190 1.940 x 1.300
Add. superstructure Side panel mm	100
Scraper floor chains	4 Chains
BPW suitable for 40 km/h, max. capacity kg at 25 km/h	Sprung tandem 18.000
Track width mm	1.950
Tyres	560/60 - 22.5 TL 167 A8 Flotation
Overrun automatic reverse drive system	-
Oil brake system	Optional
Dual-circuit pneumatic brake system	Standard
4 vertical rollers (fine spreading unit)	-
2 horizontal rollers (wide spreading unit)	Standard
Hydraulic scraper floor drive with quick draining, infinitely variable, feed with forward and return	Standard
Spreading unit opening mm	1.940
Spreading unit height max. mm	1.400
Operating width (depending on manure texture) mm and lateral ladder	max. 12.000
All protective devices, protective grille at the front	Standard
Lighting system and wheel chocks	Standard



# Sweep-off carriage

TANDEM

OL ASW 200  
Tandem



OL ASW 200 – Entladen mit modernster Technik

## The new push-off technique „Transport technology of the future“

- High loading capacity
- Hydraulic support leg
- Top and bottom hitch with drawbar suspension
- Different sliding seals
- Transport goods can be compacted or dosed
- Stable trough construction, 4mm wall thickness, 5mm floor continuous - unwelded
- Vertical stanchions and box Professionalle on the upper edge of the trough increase stability
- Hydraulic tailgate for additional loading capacity, grainproof
- Powerful industrial strength hydraulic cylinders for sliding technology
- No stability problems because of push-off technology
- Easy unloading: on uneven terrain as well as in low halls.

Alternatively  
available as transfer  
car with heavy-duty  
screw conveyor



Model	OL ASW 200
Article nr.	100093
Perm. total weight kg	20.000 - 24.000
Dead weight approx kg	7.900
Bridge mm, LxWxH	7.000 x 2.300 x 2.000
Platform height approx. mm*	1.450
Max. axle loading capacity kg	10.000 kg
Track width approx. mm	1.950 / 2.150
Tyres	560/60-22.5 158 A8
Brake system	Dual-circuit pneumatic, 4 wheel

\* Height depending on tyre size (brand)



# Sweep-off carriage

TANDEM

OL ASW 200 B  
Tandem



## Sweep-off carriage combined with wide spreading unit, conversion to manure spreader

- High loading capacity
- Year round vehicle utilisation
- Uniform distribution accuracy due to wide spreading unit
- Extremely fast unloading time
- Universal use for spreading materials such as cattle and poultry manure, compost or lime
- All functions are easy to coordinate through one control device



Sweeping floor



Conversion to manure spreader with wide spreading unit



Closed volume flap



Two large spreading plates

Model	OL ASW 200 B
Article nr.	116833
Perm. total weight kg	20.000 - 24.000
Dead weight approx kg	8.300
Bridge mm, LxWxH	7.000 x 2.300 x 2.000
Platform height approx. mm*	1.450
Max. axle loading capacity kg	10.000 kg
Track width approx. mm	1.950 / 2.150
Tyres	560/60-22.5 158 AB
Brake system	Dual-circuit-compressed air, 4-wheel with ALB regulation on front and rear axle

\* Height depending on tyre size (brand)



# Sweep-off carriage

TRIDEM

with forced steering

The „Gigaliner“  
„With intelligent transport system“

OL ASW 340  
Tridem



Alternatively  
available as  
transfer car with  
heavy-duty screw conveyor

Lateral view with large volume flap



Sprung drawbar up to max. 4 t drawbar load



Schiebeaggregat



## Advantages that might convince you:

- Robust trough construction (no simple sandwich elements, 5mm wall thickness, 5mm floor)
- Lateral stanchion reinforcement
- Up to 60% more loading capacity due to compaction (depending on cargo)
- Extremely fast unloading time
- Robust Oehler sweep-off system, also for heavy cargo
- Robolan - minimal wear sliding Professionalles (truck standard)
- Low construction resulting in a favorable center of gravity
- Highest stability
- High loading capacity up to 50 m<sup>3</sup>
- Low unloading height
- Lower wear compared to scraper floor / chain floor
- Reliable and robust (no serviceable wear parts)
- Automatic hose reel

Model	OL ASW 340
Article nr.	103570
Perm. total weight kg	34.000
Dead weight approx kg	11.500
Bridge mm, LxWxH	9.000 x 2.300 x 2.000/2.500
Platform height approx. mm*	1.500
Max. axle loading capacity kg	Adjustable parabolic suspension, max. capacity at 60 km/h
Track width approx. mm	2.150
Tyres	560/60-22.5 158 AB
Brake system	Dual-circuit pneumatic, 6 wheel

\* Height depending on tyre size (brand)



# Combination vehicles

From 6t single-axle trailers to 18t tandem trailers

The best-selling Combination vehicles  
The ideal vehicle for a year round utilisation

- The cheap alternative
- From a 100% 3-way tipping trailer - with little conversion time - to a full-featured forest trailer
- Different crane attachments (also Z-cranes) available
- Robust, low construction - high off-road capability
- All vehicles standard with 5mm floor plate - conical bridge
- High loading capacity
- All vehicles with BPW axles (16t ADR axles)
- All vehicles available with TÜV approval up to 40 km/h at maximum payload



OL EDK 60 K

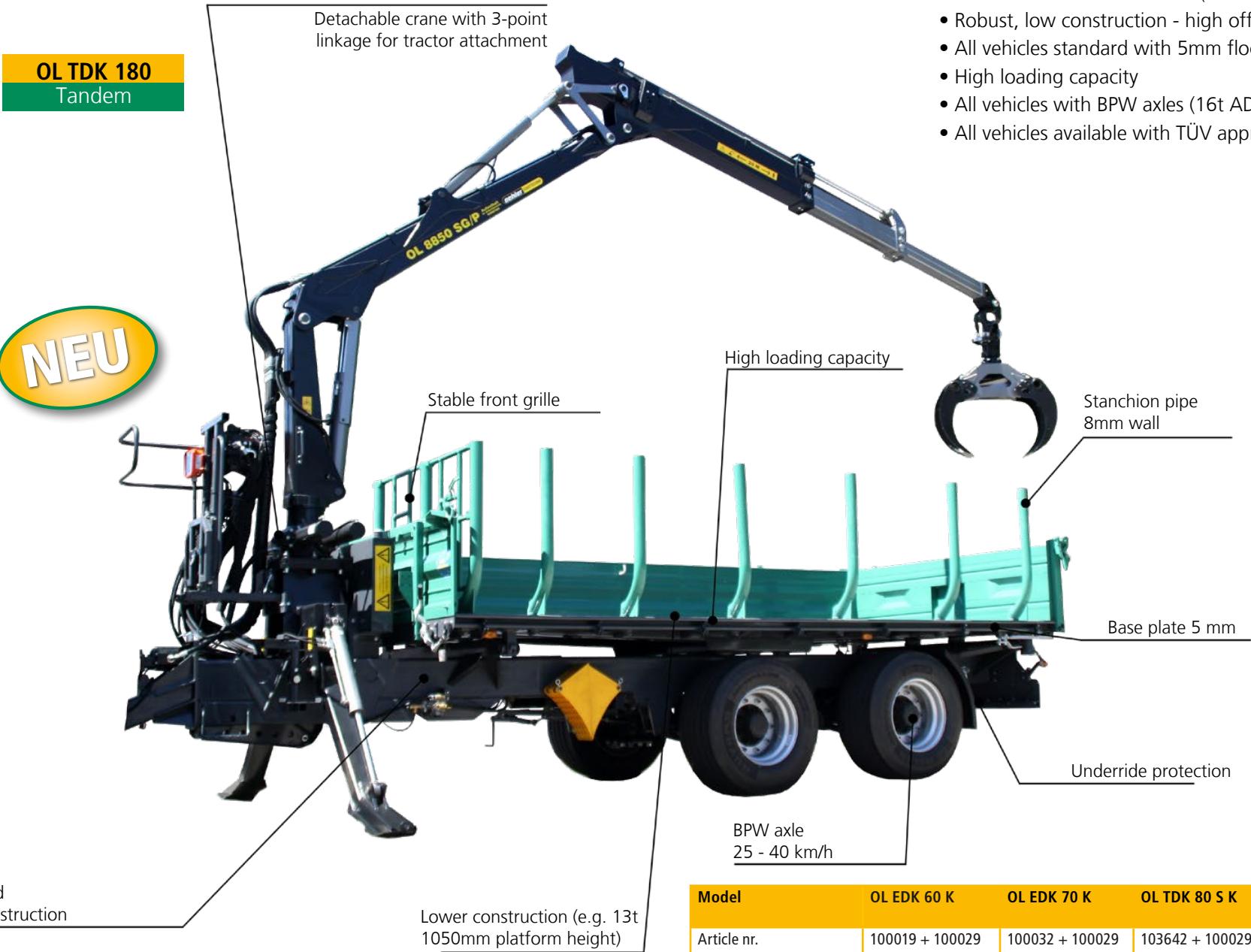


OL EDK 60 K



OL EDK 60 K with OL 7000

NEU



OL TDK 80 K with attachment and crane OL 7000 / SG

Stanchion holder for solid material



Floor cap (grainproofed)



Robust, welded stanchion holder



Ladder and seat



Model	OL EDK 60 K	OL EDK 70 K	OL TDK 80 S K	OL TDK 80 K	OL TDK 120 K	OL TDK 130 K	OL TDK 160 K
Article nr.	100019 + 100029	100032 + 100029	103642 + 100029	100037 + 101436	100050 + 101436	103618 + 101436	100056 + 100138
Perm. total weight kg	6.000	7.000	8.000	8.000	12.000	13.000	16.000
Dead weight approx kg	1.600	1.600	1.800	2.480	2.560	2.700	3.300
Bridge measurements mm L x W x H	4000x2110(2060) x500	4000x2110(2060) x500	4000x2110(2060) x500	4500x2240(2180) x500	4500x2240(2180) x600	4500x2240(2180) x600	5000x2300(2360) x600
Platform height approx. mm*	990	990	1.180	1.180	1.180	1.210	1.320
BPW (Bergische Achsen) Capacity max. kg	6.500	8.000	11.000	11.000	12.400	12.400	18.000
Track width approx. mm	1.700	1.700	1.700	1.700	1.700	1.700	1.850
Tyres	13.0/75-16 TL 10 PR AW (135A8) <sup>1</sup>	12.5/80-18/12PR <sup>1</sup>	13.0/75-16 TL 10 PR AW (135A8) <sup>2</sup>	13.0/75-16 TL 10 PR AW (135A8) <sup>2</sup>	12.5/80-18/142 A8 <sup>2</sup>	12.5/80-18/142 A8 <sup>2</sup>	385/65 R 22,5 retreaded <sup>2</sup>
Brake system	Overrun automatic reverse drive	Dual-circuit pneumatic	Overrun automatic reverse drive	Overrun automatic reverse drive	Dual-circuit pneumatic	Dual-circuit pneumatic	Dual-circuit pneumatic
Stanchions	8	8	8	10	10	10	12

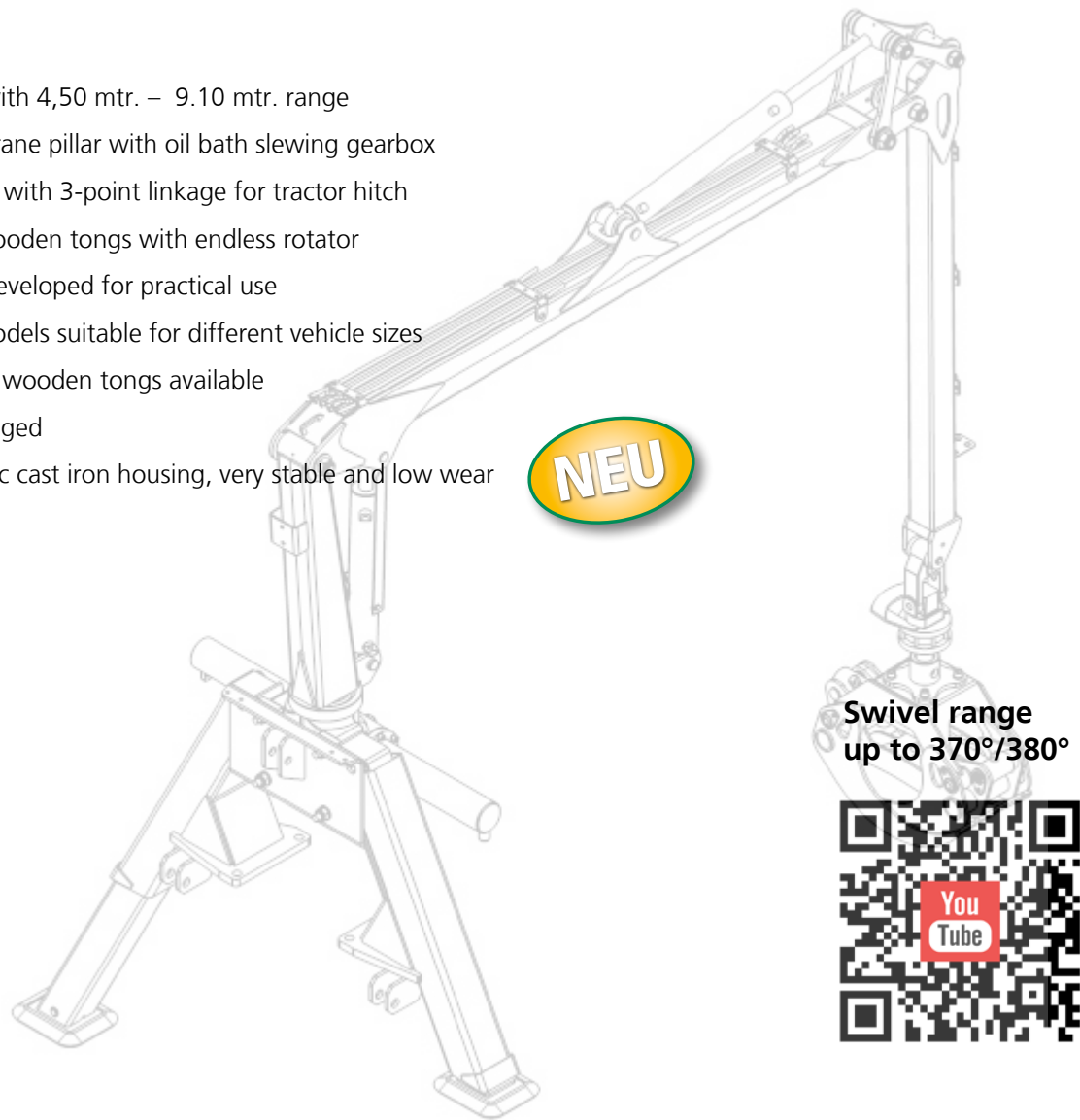
\* Height depending on tyre size (brand)



# Cranes

## The professional crane programme

- Cranes with 4,50 mtr. – 9.10 mtr. range
- Robust crane pillar with oil bath slewing gearbox
- Standard with 3-point linkage for tractor hitch
- Stable wooden tongs with endless rotator
- Cranes developed for practical use
- Crane models suitable for different vehicle sizes
- Different wooden tongs available
- Joints bulged
- Monobloc cast iron housing, very stable and low wear



## Professional crane OL 4500 SG/P



THK 80 S with retracted OL 4500 SG



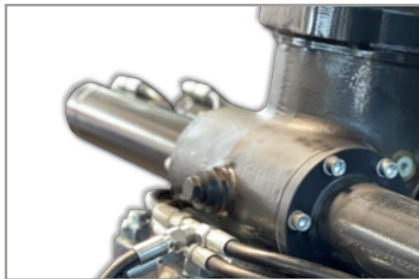
THK 80 S with OL 4500 SG/P without telescope



Wide angle joint



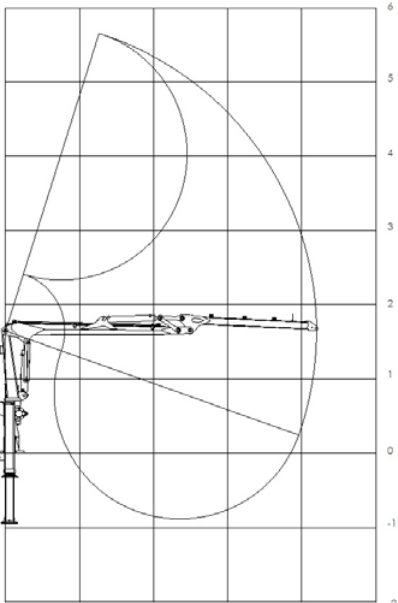
Cross-lever control, 7-fold mechanical



Monobloc cast iron housing

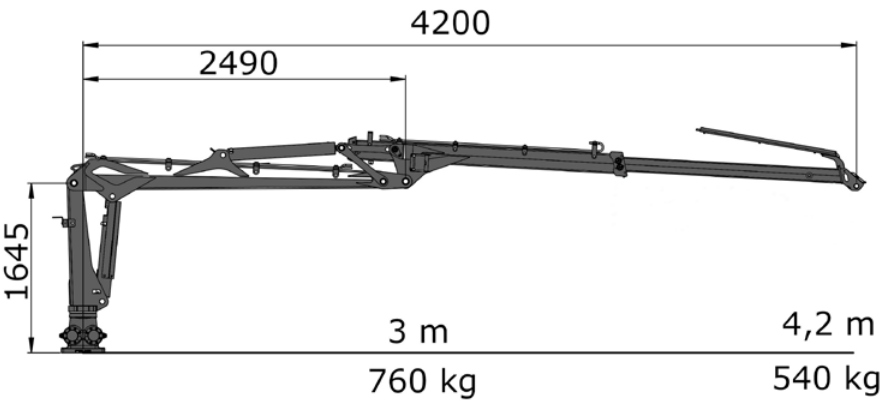


HZ 106



Range diagram OL 4500 SG/P

Model	OL 4500 SG/P	OL 5600 SG/P	OL 6700 SG/P	OL 7000 SG/P	OL 7400 SG/P	OL 7550 SG/P	OL 8850 SG/P
Article nr.	125150	125151	134342	125153	126989	126973	126975
Max. reach / incl tongs m	4.2 / 4.7	5.4 / 5.9	6.4 / 7.0	6.8 / 7.4	7.1 / 7.7	7.2 / 7.8	8.6 / 9.2
Stroke torque kNm	26 kNm	26 kNm	41 kNm	44 kNm	52 kNm	72 kNm	72 kNm
Swing torque kNm	6 kNm	7.5 kNm	12 kNm	12 kNm	15 kNm	19 kNm	19 kNm
Lifting force 4m**	570 kg	530 kg	820 kg	850 kg	980 kg	1.350 kg	1.200 kg
Lifting force max.**	540 kg	370 kg	450 kg	490 kg	560 kg	780 kg	510 kg
Swing cylinder	2	2	4	4	4	4	4
Telescope	nein	1.3 m	1.50 m	1.6 m	1.6 m	2.0 m	3.3 m
Wide angle joint	Ja	Ja	Ja	Ja	Ja	Ja	Ja
Support	A-Support	A-Support	A-Support	Folding feet	Folding feet	Folding feet	Folding feet
Control system	Cross lever	6 mech. + 2 el.	6 mech. + 2 el.	6 mech. + 2 el.	6-fold mech.	6-fold mech.	6-fold mech.
Rotator	30 kN	30 kN	30 kN	30 kN	40 kN	50 kN	50 kN
Tongs m²	0.16 m²	0.16 m²	0.18 m²	0.18 m²	0.23 m²	0.23 m²	0.23 m²
Tongs Max spread	1.060 mm	1.060 mm	1.250 mm	1.250 mm	1.450 mm	1.450 mm	1.450 mm



Model	OL 4500 SG/P
Article nr.	125150
Max. reach / incl tongs m	4.2 / 4.7
Stroke torque kNm	26 kNm
Swing torque kNm	6 kNm
Lifting force 4m**	570 kg
Lifting force max.**	540 kg
Swing cylinder	2
Telescope	nein
Wide angle joint	Ja
Support	A-Support
Control system	Cross lever
Rotator	30 kN
Tongs m²	0.16 m²
Tongs Max spread	1.060 mm

\*\* without tongs

\*\* without tongs



# Cranes

## Professional Cranes OL 5600 SG/P



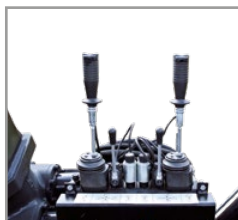
## Professional Cranes OL 6700 SG/P



THK 90 P with OL 6700 SG/P



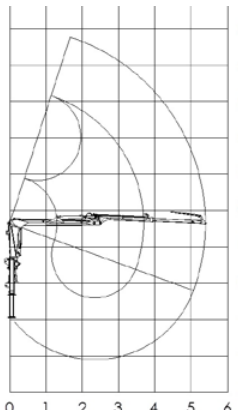
Wide angle joint



Cross-lever control  
6-fold mechanical  
2-fold electrical



Telescopic function



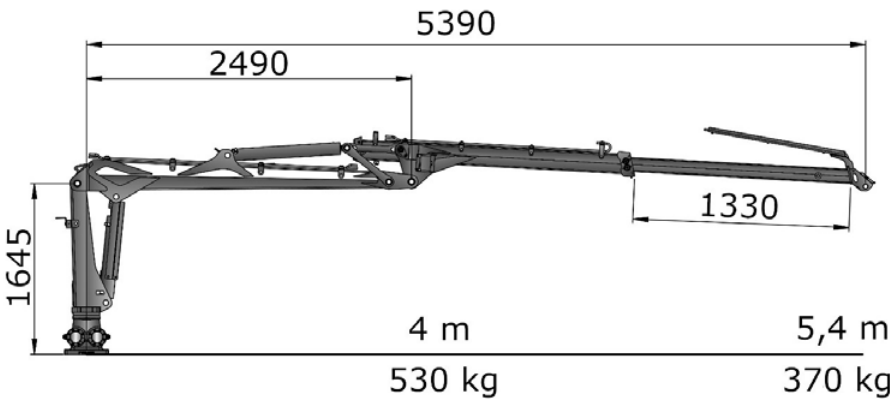
Range diagram OL 5600 SG/P



Monobloc cast iron housing



HZ 106

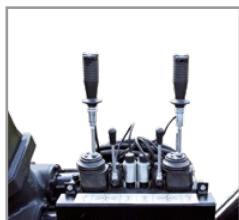


Model	OL 5600 SG/P
Article nr.	125151
Max. reach / incl tongs m	5.4 / 5.9
Stroke torque kNm	26 kNm
Swing torque kNm	7.5 kNm
Lifting force 4m**	530 kg
Lifting force max.**	370 kg
Swing cylinder	2
Telescope	1.3 m
Wide angle joint	Ja
Support	A-Support
Control system	6 mech. + 2 el.
Rotator	30 kN
Tongs m²	0.16 m²
Tongs Max spread	1.060 mm

\*\* without tongs



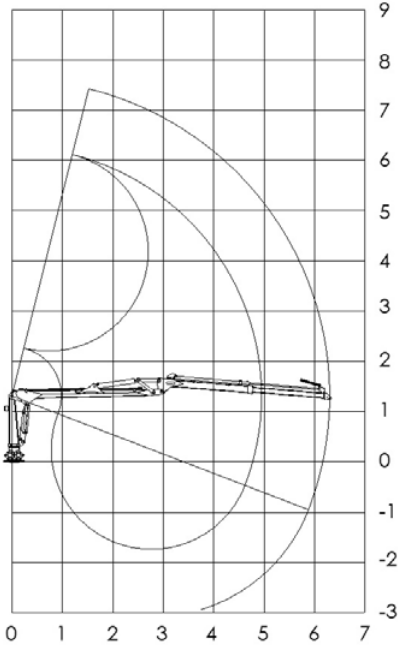
Wide angle joint



Cross-lever control  
6-fold mechanical  
2-fold electrical



Telescopic function



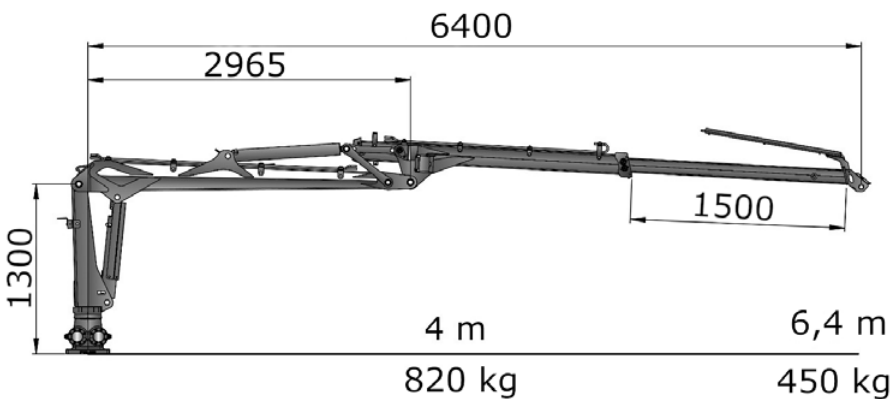
Range diagram OL 6700 SG/P



Monoblock Cast iron housing



HZ 125



Model	OL 6700 SG/P
Article nr.	134342
Max. reach / incl tongs m	6.4 / 7.0
Stroke torque kNm	41 kNm
Swing torque kNm	12 kNm
Lifting force 4m**	820 kg
Lifting force max.**	450 kg
Swing cylinder	4
Telescope	1.50 m
Wide angle joint	Ja
Support	A-Support
Control system	6 mech. + 2 el.
Rotator	30 kN
Tongs m²	0.18 m²
Tongs Max spread	1.250 mm

\*\* without tongs



Cranes

Professional Cranes OL 7000 SG/P



THK 110 with OL 7000 SG/P



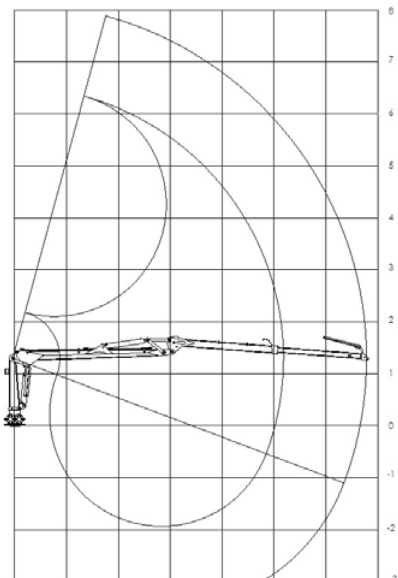
Wide angle joint



Cross-lever control  
6-fold mechanical  
2-fold electrical



Telescopic function



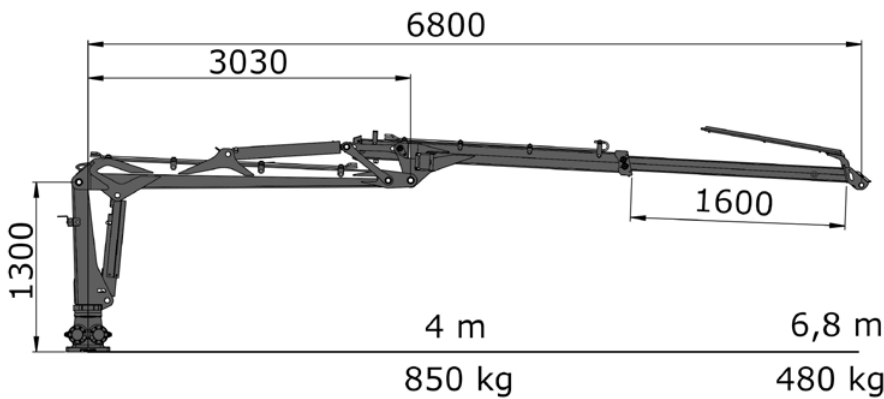
Range diagram OL 7000 SG/P



Monobloc cast iron housing



HZ 125



Model	OL 7000 SG/P
Article nr.	125153
Max. reach / incl tongs m	6.8 / 7.4
Stroke torque kNm	44 kNm
Swing torque kNm	12 kNm
Lifting force 4m**	850 kg
Lifting force max.**	490 kg
Swing cylinder	4
Telescope	1.6 m
Wide angle joint	Ja
Support	Folding feet
Control system	6 mech. + 2 el.
Rotator	30 kN
Tongs m²	0.18 m²
Tongs Max spread	1.250 mm

\*\* without tongs

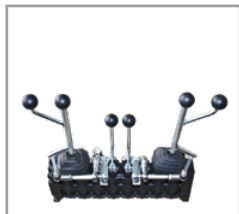
Professional Cranes OL 7400 SG/P



THK 90 P with OL 7400 SG/P



Wide angle joint



6-fold-controls



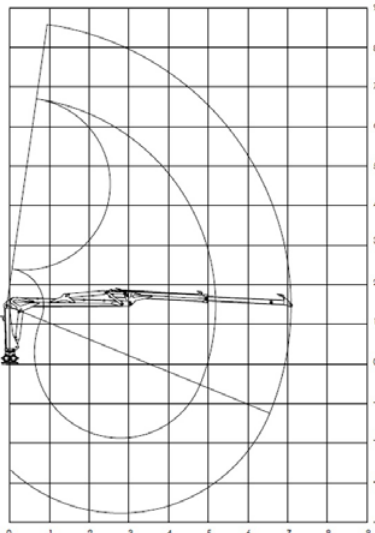
Telescopic function



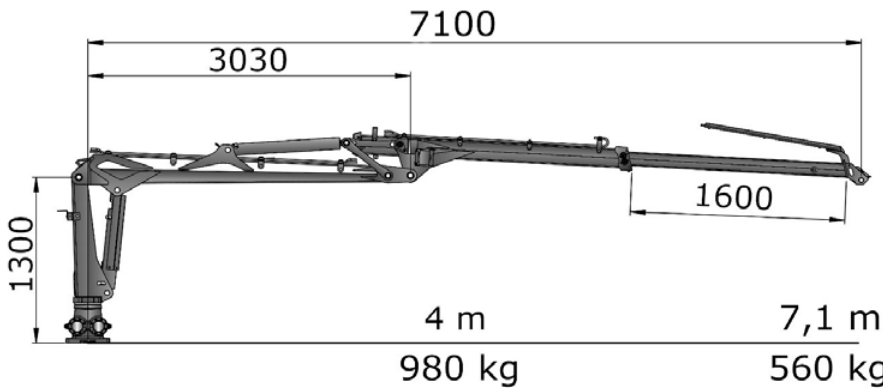
Monobloc cast iron housing



HZ 145



Range diagram OL 7400 SG/P



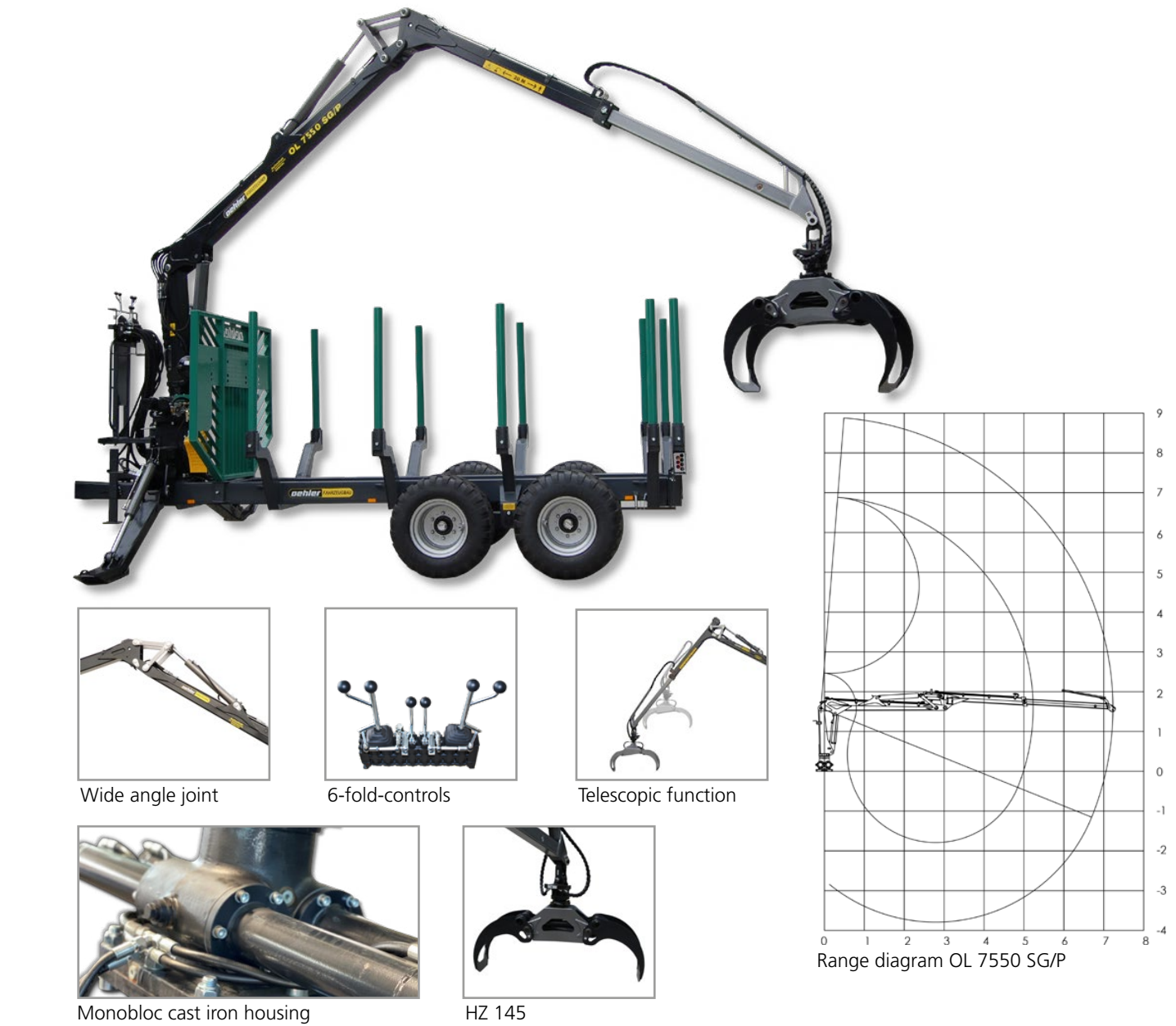
Model	OL 7400 SG/P
Article nr.	126989
Max. reach / incl tongs m	7.1 / 7.7
Stroke torque kNm	52 kNm
Swing torque kNm	15 kNm
Lifting force 4m**	980 kg
Lifting force max.**	560 kg
Swing cylinder	4
Telescope	1.6 m
Wide angle joint	Ja
Support	Folding feet
Control system	6-fold mech.
Rotator	40 kN
Tongs m²	0.23 m²
Tongs Max spread	1.450 mm

\*\* without tongs



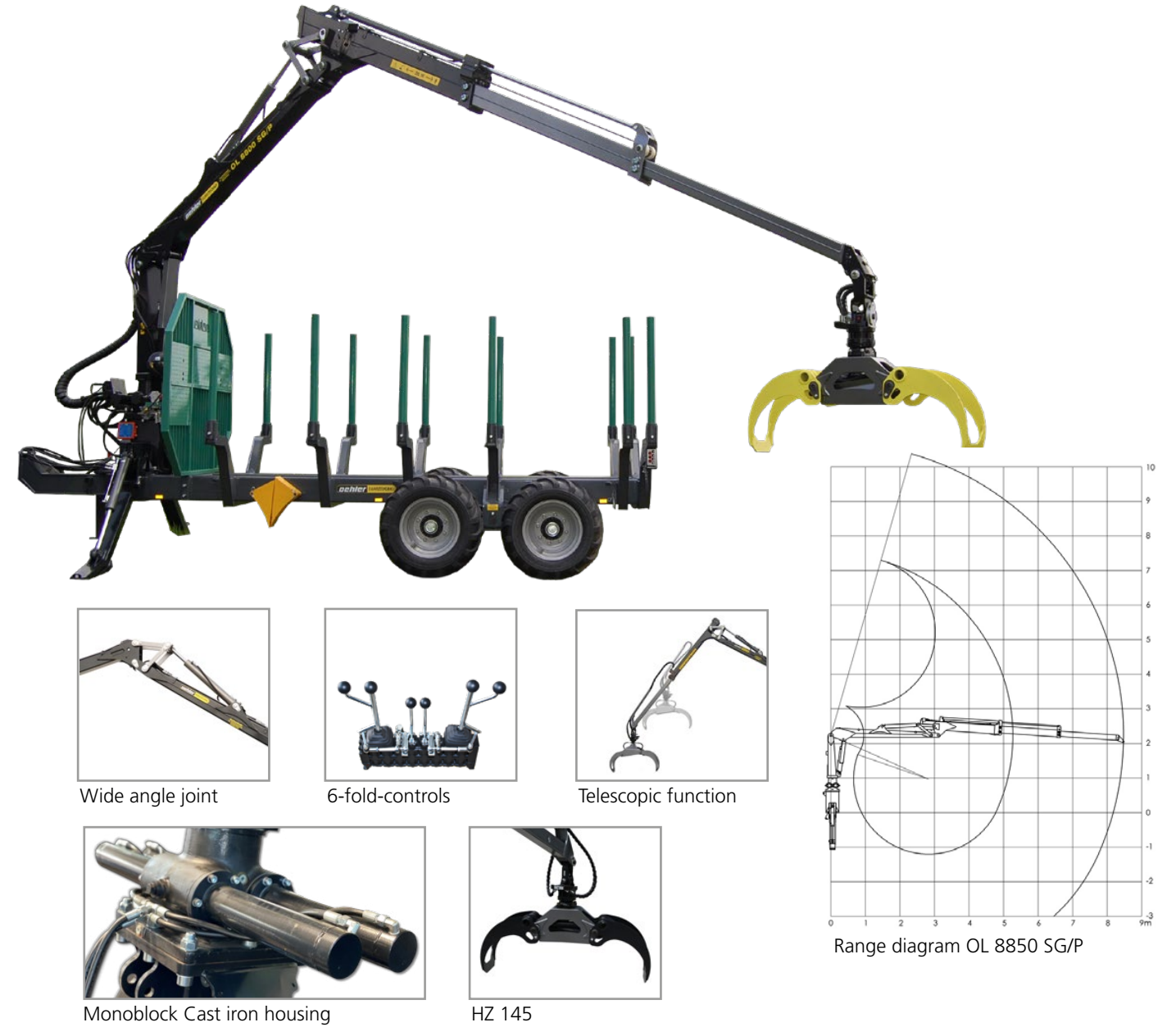
# Cranes

## Professional Cranes OL 7550 SG/P



Model	OL 7550 SG/P
Article nr.	126973
Max. reach / incl tongs m	7.2 / 7.8
Stroke torque kNm	72 kNm
Swing torque kNm	19 kNm
Lifting force 4m**	1.350 kg
Lifting force max.**	780 kg
Swing cylinder	4
Telescope	2.0 m
Wide angle joint	Ja
Support	Folding feet
Control system	6-fold mech.
Rotator	50 kN
Tongs m²	0.23 m²
Tongs Max spread	1.450 mm

## Professional Cranes OL 8850 SG/P



Model	OL 8850 SG/P
Article nr.	126975
Max. reach / incl tongs m	8.6 / 9.2
Stroke torque kNm	72 kNm
Swing torque kNm	19 kNm
Lifting force 4m**	1.200 kg
Lifting force max.**	510 kg
Swing cylinder	4
Telescope	3.3 m
Wide angle joint	Ja
Support	Folding feet
Control system	6-fold mech.
Rotator	50 kN
Tongs m²	0.23 m²
Tongs Max spread	1.450 mm

\*\* without tongs

\*\* without tongs



# Cranes

The professional Z-cranes  
available from 6,3 to 7,0 m

- The allrounder:
- Forestry
  - Agriculture
  - Gardening and landscaping

OL 6300 Z  
Tandem



THKL 130 with OL 6300 Z



Tank for own oil supply



THKL 130 with OL 6300 Z



OL TDK 80 K with Foliage attachment and crane OL 6300 Z

- Compact truck construction
- Joints bulged
- Ladder and folding seat
- Very good overview
- Folding or „H“-support
- Standard with cylinder protection

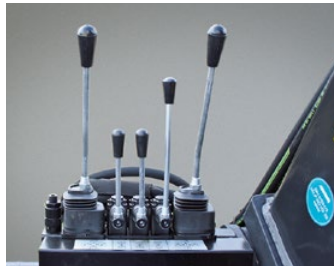
Model	OL 6300 Z	OL 7000 Z	OL 8900 Z
Article nr.	102261	100183	130169
Max. reach	6.3	7.0	8.9
Pivoting range*	400	400	400
Hydraulic support	Lateral folding supports adjustable	Lateral folding supports adjustable	Lateral folding supports adjustable
Telescope mm	1.150	1.200+1.200	1.580+1.580
Mounting onto tractor hydraulic possible	For mounting only	For mounting only	For mounting only
Lifting capacity at max. reach kg*	500	900	750
Lifting capacity at 4m approx kg	700	1600	1800
Number swing cylinders	4	4	4

\* \* without tongs

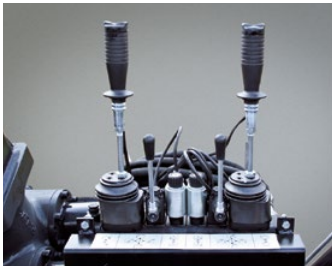


# Crane control systems

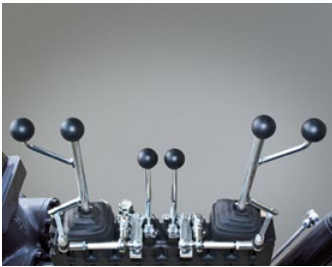
## Standard Crane control modules



Cross-lever control  
7-fold mechanical



Cross-lever control  
6-fold mechanical, 2-fold electrical



6-fold control mechanical



Hand and foot operation combined

Model	OL4500SG/P	OL5600SG/P	OL6700SG/P	OL7000SG/P	OL7400SG/P	OL7550SG/P	OL8850SG/P	OL6300Z	OL7000Z	OL8900Z
Cross lever Control system, 7-fold mechanical	Standard	–	–	–	–	–	–	–	–	–
Cross lever Control system, 6-fold mechanical, 2-fold electrical	–	Standard	Standard	Standard	–	–	–	–	–	–
6-fold Control system mechanical	–	–	–	–	Standard	Standard	Standard	–	–	–
Manual / Foot operation combined	–	–	–	–	–	–	–	Standard	Standard	Standard
Joystick / cabin control system	Optional*									
Cable control	Optional*									
Radio remote control	Optional*									

\*Conversion or retrofitting possible

## Additional professional-crane control systems



**X 50**  
Professional valve

- Volume flow up to **80 l/min**

- With proportional pressure compensators valve
- Constant flow pump standard
- Pressure compensator technology
- Follow-up control in sandwich design
- specially tuned control sliders allowing for perfect interplay of the specific functions
- 8 separate functions as standard
- Working safely and gentle on materials
- Load-independent work
- Suitable for Z-cranes
- optional load Sensing compatibility



**X 100**  
Professional valve

- Volume flow up to **120 l/min**
- **All functions available at any time**

## Joystick / cabin steering with cable

The joysticks have a pleasant surface and an ergonomic palm rest. They are perfect for long days in the forest. 6 functions can be controlled proportionally via joystick. All 6 functions are ergonomically optimized and easily accessible (3 functions each). Thus, all crane functions can be controlled extremely sensitively.



Professional Valve X50 up to OL 7000 SG/P Art. Nr.: 132431  
Professional Valve X100 from OL 7400 SG/P Art. Nr.: 132432

## Cable control

This solution bridges the gap between a radio control system and the cabin control system: 2 Joysticks assembled in a box, cable set, valve, Plug'n'Play



Professional Ventil X50 up to OL 7000 SG/P Art. Nr.: 132433  
Professional Ventil X100 from OL 7400 SG/P Art. Nr.: 132434

## Radio remote control HBC Linus

The ergonomic control with linear lever for particularly sensitive operation. 6 positions for different combinations of pushbuttons, toggle or rotary switches/buttons, STOP impact switch, up to 5 switching commands ( on / off). Up to 6 stepless commands, battery life for continuous use: up to 20 hours, LED to indicate operating/battery status. Incl. hip belt, only 1.6 kg weight.



Professional Ventil X50 up to OL 7000 SG/P Art. Nr.: 132427  
Professional Ventil X100 from OL 7400 SG/P Art. Nr.: 132428

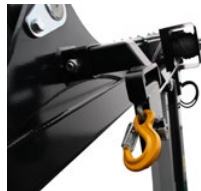
## Radio remote control HBC Professional

HBC Professional radio remote control stands for precision at its highest level. The ergonomic control covers 4 different speeds for extremely precise work. Hydraulics and controls operating in perfectly synchronized harmony. Including „Teach“ battery allowing for extremely convenient configuration of the remote control. Range of up to 120m. Simply plug in instead of the normal battery and easily and quickly configure sensitivity. With comfortable hip strap. Weighs only 2 kg.



Professional Ventil X50 up to OL 7000 SG/P Art. Nr.: 132269  
Professional Ventil X100 from OL 7400 SG/P Art. Nr.: 132259

## Radio remote control also compatible with crane winch





# Cranes - Forest trailers

The small professional forest trailer  
8 t overrun brake 10/11 t pneumatic - TÜV certified

Forest trailer  
with robust single pipe frame



Universal-Forest trailers



Platform with mounting for control system - optionally



THK 110 E with crane OL 7000 SG/P



THK 90 P with crane OL 6550



THK 90 P with brushwood tub

- Mit Overrun brake up to 8t total weight
- TÜV certified up to 8t 25 km/h
- Double frame (rectangular pipe frame)
- Universal transport possibility
- Stanchions can be closed laterally with wood
- Closed loading platform
- continuously adjustable axle
- Robust adjustable stanchions
- Axle BPW 25/40 km/h
- Pivoting axle with large compensation
- Great maneuverability thanks to tiller steering with oversized cylinder
- Stable single pipe frame 10t total weight
- Standard 4-wheel braked
- Large pendulum compensation
- adjustable stanchions and axle
- highly maneuverable due to tiller steering
- Standard with cylinder protection
- Brake systems: Overrun brake and oil brake dual circuit pneumatic brake, oil brake

Loading platform EHK 80



Single pipe frame with adjustable stanchions



Model	OL EHK 80	OL THK 80 S	OL THK 90 P	OL THK 110 E
Article nr.	103078	124579	106447	102658
permitted total weight kg	7600	8000	8000/10000	11000
Empty weight ca. kg (depending on equipment)	1240	1300	1600	1700
Loading length mm	3550	3000	4000	4100
Loading height mm	1470	1270	1300	1400
Loading width ca. mm	1230 - 1800	830 - 1730	900 - 1650	800 - 1800
Max. axle loading capacity kg	BPW 6.500 up to 40 km/h	Robust pivoting axle	Robust pivoting axle	BPW Tandem pivoting axle up to 40 km/h 12000
Track width approx. mm	1700	1700	1650	1650
Tyres	40.0/60-15-5	30.0/80-15.3 TL 138 AB Rot+	11.5/80-15.3/12 PR	400/60x15.5
Brake system	Overrun brake	Overrun brake	Overrun, hydraulic, 2-circuit compressed pneumatic brake	Dual-circuit pneumatic
Stanchions	8	6	8	8

\* Height depending on tyre size (brand)



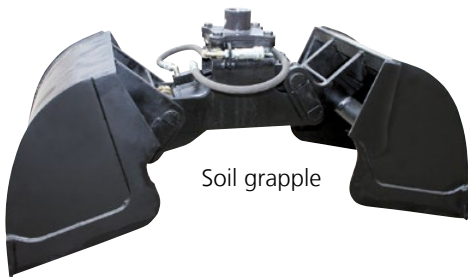
# Forest trailers

## Premium class



OL THK 130 with crane OL 7200 SG/P

- Rugged chassis, double frame (rectangular pipe)
- BPW pivoting axles
- 4-wheel braked
- Lamps with protective grille
- 2 Steering cylinders
- TÜV approval for 25-40 km/h at maximum payload



Soil grapple

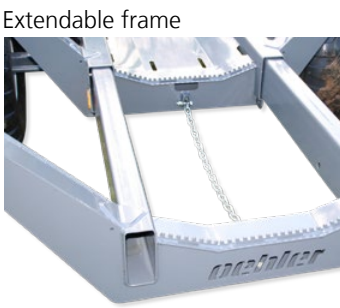


Manure tongs

Compact stable double pipe frame



Stable stanchions



Extendable frame



lamps with protective grille



OL THK 160 with crane OL 8850 SG/P

Stable and extendable double pipe frame



- lamps with protective grille
- 2 Steering cylinder
- HALDEX pneumatic system
- Extendable frame (900 mm)
- optional crane seat

Model	OL THK 130	OL THK 160
Article nr.	104730	102655
permitted total weight kg	13000	16000
Empty weight ca. kg (depending on equipment)	2120	3400
Loading length mm	4100 - 5100	4500/5400
Loading height mm	1600	1800
Loading width ca. mm	800 - 1900	830 - 2120
Max. axle loading capacity kg	BPW Tandem pivoting axle up to 40 km/h 12000	BPW Tandem pivoting axle up to 40 km/h 18000
Track width approx. mm	1660	1950
Tyres	40.0/60-15-5/145 AB	50.0/45-20 18 PR
Brake system	Dual-circuit pneumatic	Dual-circuit pneumatic
Stanchions	10	12 - 14

\* Height depending on tyre size (brand)



# Optional Extras



Ballast flap 3-way tipping trailer



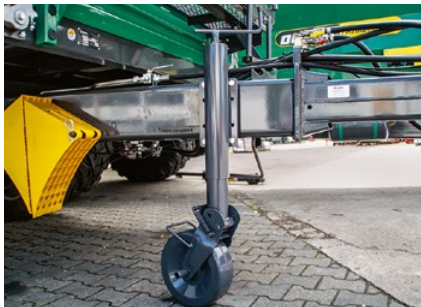
Ballast flap 3-way tipping trailer



Ballast flap Stone trough



Hydraulic support leg



Supporting wheel



Scissors supporting leg



Potato tray rear view



Potato tray side view



Potato tray closed



Automatic trailer coupling



Trailer coupling max. 8 t



Underride protection



Incline supports



Incline supports



Sidewall lifting spring, left and right



Lashing eyes unfolded



Lashing eyes folded



Adjustable Underride protection



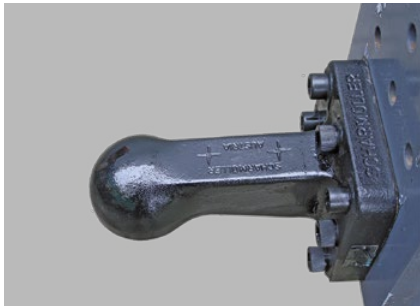
Grain slider



Grain slider with Grain chute



Grain slider with Fine dosing



Spherical head



Towing eyelet



Sprung drawbar with max. 4t drawbar load



Sidepanel viticulture version



Hydraulic closing sidepanel



Sidepanel reinforcement viticulture



# Optional Extras



Cardan shaft with wide angle and cam clutch



Tool box



Spare wheel holder



V-tiller



Y-tiller



Mill triangle



Low construction - spring under axle



Forced steering



Forced steering



Central locking up to 7 t



Central locking from 8 t



Tilt bearing with crossover safety fuse



Steering axle Tandem



Steering axle Tridem



Caster steering



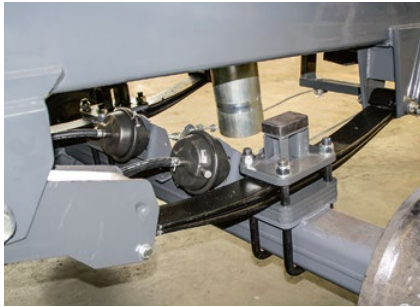
Warning sign front



Warning sign rear



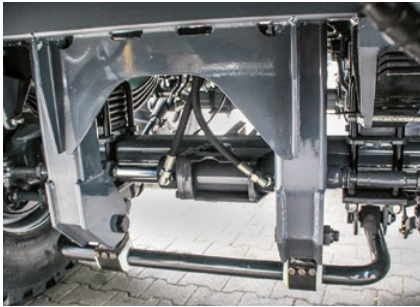
Side marking light



Parabolic suspension



Leaf spring



Stabilizer



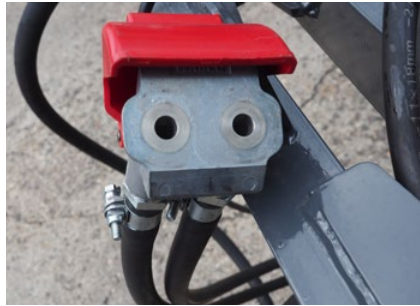
Wheel chocks



Tank for own oil supply



7 pin plug



Duomatic vehicle front



Duomatic vehicle rear



Duomatic



Secondary oil and pneumatic connection



# Optional Extras

## Drop-top trailer cover



OL ZDK 180 with hydraulic drop top



## rolling tarpaulin



ZDK 120 with rolling tarpaulin



ZDK 120 with rolling tarpaulin, rear view

## Flip Tarp mesh tarp trough/Sweep-off carriage



OL ZDK HW 120 with rolling tarpaulin



OL ZDK HW 120 laterally tilted

## Sliding tarp trough/Sweep-off carriage



## rolling tarpaulin with grain screw attachment



OL DDK 240 with folded grain screw



OL DDK 240 grain screw extended



# Optional Extras



OL EDK 60 with gullwing doors



OL EDK 60 S with 3-point linkage and PTO shaft drive with log splitter OL 190

## Hydraulically foldable attachments



Hydraulically foldable attachment



## Special/customized painting



## Lamps



Lamps starting from ZDK 180



Lamps starting from ZDK 180 up to DDK with protective grille



Lamps EDK 20 - EDK 80



Lamps protective grille EDK 20 - EDK 80

## Specialized constructions





Agricultural Trailers | Forestry Equipment | Gardening Equipment



...Quality and Innovation from the Black Forest

# BLACK FOREST EDITION



Feel free to contact us!

Windschläger Str. 105-107  
D-77652 Offenburg-Windschläg  
Telefon: +49(0)781/9139-0  
Telefax: +49(0)781/9139-30  
Internet: [www.oehlermaschinen.de](http://www.oehlermaschinen.de)  
E-Mail: [info@oehlermaschinen.de](mailto:info@oehlermaschinen.de)

Oehler East:  
Zeppelin-Straße 13-15  
D-07819 Triptis  
Telefon: +49(0)36482/373-0  
Telefax: +49(0)36482/373-18  
E-Mail: [info@oehlermaschinen-triptis.de](mailto:info@oehlermaschinen-triptis.de)



Version: 2022-01